

At: Gadeirydd ac Aelodau'r Pwyllgor  
Archwilio Perfformiad

Dyddiad: Dydd Gwener, 14  
Chwefror 2014

Rhif Union: 01824 712554

ebost: dcc\_admin@denbighshire.gov.uk

Annwyl Gynghorydd

Fe'ch gwahoddir i fynychu cyfarfod y **PWYLLGOR ARCHWILIO PERFFORMIAD, DYDD IAU, 20 CHWEFROR 2014 am 9.30 am yn YSTAFELL BWYLLGORA 1A, NEUADD Y SIR, RHUTHIN.**

Yn gywir iawn

G Williams  
Pennaeth Gwasanaethau Cyfreithiol a Democraidd

## AGENDA

### RHAN 1 – GWAHODDIR Y WASG A'R CYHOEDD I'R RHAN HON O'R CYFARFOD

#### 1 YMDDIHEURIADAU

#### 2 DATGAN CYSYLLTIAD

Dylai Aelodau ddatgan unrhyw gysylltiadau personol neu rai sy'n rhagfarnu gydag unrhyw fater a nodwyd y dylid ei ystyried yn y cyfarfod hwn.

#### 3 MATERION BRYG GYDA CHYTUNDEB Y CADEIRYDD

Rhybudd o faterion y dylid, ym marn y Cadeirydd, eu hystyried yn y cyfarfod fel mater bryg yn unol ag Adran 100B(4) Deddf Llywodraeth Leol 1972.

#### **4 COFNODION Y CYFARFOD DIWETHAF**

Derbyn cofnodion cyfarfod y Pwyllgor Archwilio Perfformiad a gynhaliwyd ar 16 Ionawr 2014 (copi ynghlwm).

#### **5 MODERNEIDDIO ADDYSG - ADRODDIAD CYNNYDD**

Derbyn adroddiad gan y Pennaeth Addysg (copi ynghlwm) a oedd yn rhoi manylion am y cynnydd o ran Moderneiddio Addysg.

**9.35 a.m.**

#### **Egwyl Fer**

#### **6 Cwynion Perfformiad Eich Llais : Chwarter 3 (Tudalennau 5 - 10)**

Derbyn adroddiad gan y Pennaeth Cwsmeriaid a Chefnogi Addysg (copi ynghlwm) sy'n cynnig trosolwg o'r adborth a dderbyniwyd dan Bolisi Adborth Cwsmeriaid Cyngor Sir Ddinbych 'Eich Llais' yn ystod Chwarter 3 2013/14.

**10.30 a.m.**

#### **7 Rhaglen Waith Archwilio (Tudalennau 11 - 28)**

Ystyried adroddiad gan y Cydlynnydd Archwilio (copi ynghlwm) yn gofyn am adolygiad o raglen gwaith i'r dyfodol y pwyllgor a diweddaru'r aelodau ynglŷn â materion perthnasol.

**11.15 a.m.**

#### **8 Adborth gan Gynrychiolwyr y Pwyllgor**

Derbyn unrhyw ddiweddariadau gan gynrychiolwyr y Pwyllgor sy'n aelodau o wahanol Fyrddau a Grwpiau'r Cyngor.

**11.25 a.m.**

#### **AELODAETH**

William Cowie

Meirick Davies

Richard Davies

Colin Hughes

Geraint Lloyd-Williams

Peter Owen

Dewi Owens

Arwel Roberts

Gareth Sandilands

David Simmons

#### **Aelodau Cyfetholedig dros Addysg sy'n Pleidleisio (Rhifau Eitemau Agenda 5 yn unig)**

Mr G Williams

Mrs G Greenland

Ms Nicola Lewis

Ms D Houghton

Dr D Marjoram

#### **COPIAU I'R:**

Holl Gynghorwyr er gwybodaeth

Y Wasg a'r Llyfrgelloedd

Cynghorau Tref a Chymuned

## PWYLLGOR ARCHWILIO PERFFORMIAD

Cofnodion cyfarfod o'r Pwyllgor Archwilio Perfformiad a gynhaliwyd yn SIAMBR Y CYNGOR, TY RUSSELL, Y RHYL, Dydd Iau, 16 Ionawr 2014 am 9.30 am.

### YN BRESENNOL

Y Cynghorwyr William Cowie, Colin Hughes, Geraint Lloyd-Williams, Peter Owen, Dewi Owens, Arwel Roberts a/ac Gareth Sandilands.

Aelod Arweiniol i fod yn bresennol yn ôl gofyniad y Pwyllgor:- Cynghorydd Eryl Williams.

**Aelodau Cyfetholedig:-** Mrs G. Greenland, Ms D. Houghton, Ms N. Lewis, Dr. D. Marjoram a Mr G. Williams.

### HEFYD YN BRESENNOL

Cyfarwyddwyr Gweithredol: Uchelgais Economaidd a Chymunedol (RM), Pennaeth Archwiliad Mewnol (IB), Pennaeth Addysg (KE), Swyddog Perfformiad Effeithiolrwydd Ysgolion: Uwchradd (JM), Rheolwr Rhaglen: Moderneiddio Addysg (JC), Rheolwr Prosiect Canolbwynt GDd (JE), Uwch Swyddog Trosedd Amgylcheddol (KH), Cynghorydd Iechyd a Diogelwch (VR), Rheolwr Tîm Partneriaethau a Chymunedau (LG), Cydlynnydd Archwilio (RE) a Swyddog Gweinyddol (CIW).

Yn absenoldeb y Cadeirydd, y Cynghorydd D. Simmons, Cadeiriodd y Cynghorydd A Roberts, Is-Gadeirydd y cyfarfod.

Croesawodd y Cadeirydd yr Aelod Cyfetholedig Mr Gareth Williams i'w gyfarfod cyntaf o'r Pwyllgor.

#### 1 YMDDIHEURIADAU

Derbyniwyd ymddiheuriadau am absenoldeb oddi wrth y Cynghorwr(wyr) Meirick Davies, Richard Davies a/ac David Simmons

#### 2 DATGAN CYSYLLTIAD

Nid ddatganwyd unrhyw gysylltiadau personol na chysylltiadau sy'n rhagfarnu gan unrhyw Aelodau mewn unrhyw fusnes i'w ystyried yn y cyfarfod.

#### 3 MATERION BRYG GYDA CHYTUNDEB Y CADEIRYDD

Ni chodwyd unrhyw eitemau y dylid, ym marn y Cadeirydd, eu hystyried yn y cyfarfod fel materion bryg dan Adran 100B(4) Deddf Llywodraeth Leol 1972.

#### 4 COFNODION Y CYFARFOD DIWETHAF

Cyflwynwyd Cofnodion cyfarfod y Pwyllgor Archwilio Perfformiad a gynhaliwyd ddydd Iau 12 Rhagfyr 2013.

Materion yn codi: -

5. Adeiladau Rhestredig mewn Perygl - Cadarnhaodd y Cydlynnydd Archwilio bod copi o'r llythyr cefnogi a anfonwyd gan y Cadeirydd at y Gweinidog dros Chwaraeon a Diwylliant, yn cymeradwyo'r safbwyntiau a fynegwyd gan swyddogion mewn ymateb i'r ymgynghoriad ffurfiol ar y Bil Treftadaeth Newydd, a oedd yn tynnu sylw at y risgiau sy'n gysylltiedig â'r agwedd gorfodi'r ddeddfwriaeth, wedi cael eu cynnwys yn y Diweddariad Gwybodaeth

8. Adroddiad Perfformiad Cynllun Corfforaethol – Chwarter 2 2013/14 – Mewn ymateb i gwestiwn oddi wrth Dr D. Marjoram ynglŷn â darparu adroddiad cynhwysfawr ar gyflwr adeiladau ysgolion ac Ystâd yr Ysgol yn gyffredinol, eglurodd y Cydlynnydd Archwilio byddai'r adroddiad a gyflwynir i'r Pwyllgor ynglŷn â Data Llefydd Ysgol yn cychwyn y broses o archwilio cyflwr Ystâd yr Ysgol.

9. Rhaglen Waith Archwilio - Cytunodd y Pwyllgor dylid penodi'r Cynghorydd C. Hughes fel cynrychiolydd wrth gefn y Pwyllgor ar y Bwrdd Rhaglen Uchelgais Economaidd a Chymunedol.

**PENDERFYNWYD:-**

*(A) cymeradwyo'r cofnodion fel cofnod cywir, a*

*(B) bod y Cynghorydd Colin Hughes yn cael ei benodi fel Aelod wrth gefn y Pwyllgor ar y Bwrdd Uchelgais Economaidd a Chymunedol.*

**5 CYNLLUN GWEITHREDU ESTYN**

Roedd copi o adroddiad gan y Pennaeth Addysg (PA), a oedd yn manylu ar y cynnydd a wnaed mewn ymateb i'r argymhellion a wnaed gan Estyn yn dilyn arolwg 2012, eisoes wedi'i ddsbarthu.

Rhoddodd y PA grynodedb o'r adroddiad a chadarnhaodd fod prif ganfyddiadau Adroddiad Estyn yn dangos bod yr Awdurdod wedi cyflawni 'Da' ar gyfer y tri chwestiwn allweddol a oedd yn cynnwys Pa mor dda yw deilliannau, darpariaeth ac arweinyddiaeth a rheolaeth. Roedd yr holl ddangosyddion eraill hefyd wedi derbyn safon 'Da' gydag 3.1 'Arweinyddiaeth' a dderbyniodd safon 'Ardderchog'.

Atgoffwyd yr Aelodau bod Estyn wedi gwneud dau argymhelliad: -

- Argymhelliad 1: Gwella cywirdeb Asesiadau Athrawon ar ddiwedd Cyfnod Allweddol 3; ac

- Argymhelliad 2: Mewn perthynas â'r Rhaglen Partneriaeth ac adnabod pob gwasanaeth plant a phobl ifanc yn Sir Ddinbych a sefydlu system effeithiol i fesur effaith y gwasanaethau hyn i gynorthwyo'r Awdurdod a'i bartneriaid i benderfynu a yw'r gwasanaethau hyn yn cynnig gwerth am arian.

Roedd y cynnydd hyd yma yn erbyn y ddau argymhelliad, wedi'i nodi yn yr atodiadau i'r adroddiad. Roedd yr Awdurdod ar hyn o bryd ar groesffordd wrth ymateb i'r argymhellion o ganlyniad i gyfuniad o'r rhaglen effeithlonrwydd, y gwaith cydweithio rhanbarthol a chynlluniau ar gyfer asesiad Estyn yng nghyd-destun y newidiadau sydd ar y gweill yn rhanbarthol ac yn genedlaethol. Yn ystod y chwe mis nesaf byddai'r swyddogion yn gwerthuso'r gwaith a wnaed hyd yn hyn, asesu ei effeithiolrwydd ac adolygu ymagwedd yr Awdurdod tuag at gyflawni'r argymhellion yn ôl yr adnoddau sydd ar gael, ac eglurwyd bod rhai o'r gwasanaethau ar gyfer plant a phobl ifanc a holwyd gan Estyn yn 2012 yn awr yn ddarostyngedig i'r rhaglen arbedion effeithlonrwydd. Amlygwyd pwysigrwydd yr angen i gydnabod y newid yn y broses arolygu gan y PA, gan gyfeirio'n benodol at rôl y Gwasanaeth Gwella Ysgolion Rhanbarthol.

Cafwyd cadarnhad bod gwella perfformiad mewn addysg ac ansawdd adeiladau ysgolion yn un o Flaenoriaethau Corfforaethol y Cyngor ar gyfer 2012-17, a thrwy fonitro cyflwyno'r Cynllun Gweithredu gallai'r Pwyllgor gynorthwyo'r Cyngor i gyflawni rhan o'r uchelgais uchod. Er mwyn lleihau unrhyw risgiau i gefnogaeth a her ysgolion yn ysgolion Sir Ddinbych, byddai swyddogion yn monitro ac asesu ansawdd y gefnogaeth ranbarthol oddi wrth GwE. Byddai cyfle i gryfhau'r broses safoni ar gyfer Asesiadau Athrawon CA3, a dylai hyn wella ansawdd y safoni allanol, sicrhau dilyniant a chydaddoldeb Asesiadau Athrawon ar draws Gogledd Cymru.

Mewn ymateb i gwestiynau gan Aelodau, awgrymwyd bod yr adroddiad monitro nesaf yn cael ei gyflwyno i'r Pwyllgor ar ddiwedd tymor yr haf 2014. Cytunodd y Pwyllgor a gofynnodd i'r adroddiad gynnwys manylion am y camau a gymerwyd gan yr Awdurdod i fynd i'r afael â materion yn ymwneud â gwella cywirdeb asesiadau athrawon yng Nghyfnod Allweddol 3 a'u heffeithiolrwydd o ran cyrraedd y nod hwn, ynghyd â thystiolaeth bod GwE yn defnyddio Moodle i gynnal deunyddiau enghreifftiol (PDF) â lefelau yn yr holl bynciau a lefelau, a hefyd canlyniadau'r archwiliad sy'n mynd rhagddo o'r holl wasanaethau sydd ar gael i blant a phobl ifanc yn y Sir ac effeithiolrwydd y system a sefydlwyd i fesur effaith a gwerth am arian y gwasanaethau hynny ar blant a phobl ifanc y Sir.

Atebodd y PA i gwestiynau gan Dr Marjoram ac eglurodd y byddai manylion o'r gwelliannau i fynd i'r afael â'r diffygion yng nghywirdeb Asesiadau Athrawon ar ddiwedd Cyfnod Allweddol 3 yn cael eu cynnwys yn yr adroddiad nesaf, a byddai hyn yn cynnwys mesuriadau ar gyfer gwella a pherfformiad ym mhob un o'r Cyfnodau Allweddol. Rhoddodd hefyd sicrwydd na fyddai ardaloedd gwledig yn ysgwyddo baich y toriadau arfaethedig yn y gyllideb, gan fod y Cyngor yn canolbwyntio ar ddileu gwaith seilo a sicrhau y caiff y gwasanaeth gorau ei ddarparu ar gyfer yr holl drigolion ar draws y Sir.

Mynegodd y Cynghorydd C. Hughes y farn y dylid cyflwyno'r adroddiad mewn perthynas â'r Gwasanaeth Effeithiolrwydd a Gwella (GWE) Ysgolion Rhanbarthol yn i'r Pwyllgor Archwilio Perfformiad. Esboniodd y Cydlynnydd Archwilio fod Grŵp y Cadeiryddion ac Is-gadeiryddion Archwilio wedi dyrannu mater hwn i'r Pwyllgor Archwilio Partneriaethau i'w ystyried, a chadarnhaodd y gallai aelodau etholedig a

chyfetholedig fod yn bresennol yn y cyfarfod. Byddai hefyd croeso i aelodau nad ydynt ar y Pwyllgor fynychu. Yn dilyn trafodaeth bellach:-

**PENDERFYNWYD:-**

*(A) yn amodol ar y sylwadau a wnaed, bod y Pwyllgor yn nodi'r cynnydd a wnaed hyd yma wrth fynd i'r afael ag argymhellion Estyn.*

*(B) bod y Pwyllgor yn parhau i fonitro gweithrediad y Cynllun Gweithredu yn rheolaidd tan arolwg nesaf Estyn o ddarpariaeth gwasanaethau addysg yr Awdurdod.*

*(C) bod yr adroddiad monitro nesaf yn cael ei gyflwyno i'r Pwyllgor ar ddiwedd tymor yr haf 2014.*

*(d) bod yr adroddiad yn cynnwys manylion am y camau a gymerwyd gan yr Awdurdod i fynd i'r afael â materion yn ymwneud â gwella cywirdeb asesiadau athrawon yng Nghyfnod Allweddol 3 a'u heffeithiolrwydd o ran cyrraedd y nod hwn, ynghyd â thystiolaeth bod GwE yn defnyddio Moodle i gynnal deunyddiau enghreifftiol (PDF) â lefelau yn yr holl bynciau a lefelau, a*

*(E) bod yr adroddiad hefyd yn cynnwys canlyniadau'r archwiliad sy'n mynd rhagddo o'r holl wasanaethau sydd ar gael i blant a phobl ifanc yn y Sir ac effeithiolrwydd y system a sefydlwyd i fesur effaith a gwerth am arian y gwasanaethau hynny ar blant a phobl ifanc y Sir.*

## **6 CANLYNIADAU ARHOLIADAU CA4**

Roedd copi o adroddiad gan Swyddog Effeithiolrwydd Perfformiad Ysgol: Uwchradd (SEPO: S), a oedd yn manylu ar berfformiad canlyniadau arholiadau allanol ysgolion Sir Ddinbych yng Nghyfnod Allweddol 4 ac ôl-16, wedi ei ddsbarthu gyda'r papurau ar gyfer y cyfarfod.

Darparodd y SEPO:S grynodedb o'r adroddiad a oedd yn dadansoddi canlyniadau yn erbyn gwybodaeth a pherfformiad a feincnodwyd yn erbyn Awdurdodau Lleol eraill (ALI) ac yn darparu gwybodaeth ynglŷn â pherfformiad asesiadau athrawon ac arholiadau allanol ysgolion Sir Ddinbych. Roedd y rhan fwyaf o'r dangosyddion allweddol yn CA4 ar gyfer cymwysterau allanol wedi gwella. Fodd bynnag, mae'r trothwy Lefel 2 gan gynnwys Saesneg, Cymraeg a Mathemateg wedi gostwng ychydig oedd wedi effeithio ar y Dangosydd Pwnc Craidd (DPC). Roedd Safleoedd Asesiadau ac Arholiadau ar gyfer 2011/13 wedi eu cynnwys yn yr adroddiad

Eglurodd mai un o'r dangosyddion perfformiad allweddol ar ddiwedd cyfnod allweddol 4 oedd y Trothwy Lefel 2 gan gynnwys Saesneg, Cymraeg a Mathemateg ac roedd data a gwybodaeth briodol wedi eu cynnwys yn Atodiad 1. Roedd manylion yr ystadegau Trothwy Lefel 2 yn ymwneud ag ysgolion unigol wedi eu cynnwys yn yr adroddiad, ynghyd â chanlyniadau dros dro Lefel 2 ar gyfer Ysgol Plas Brondyffryn, Dinbych.

Roedd manylion y Bandiau Uwchradd wedi cael eu darparu a chadarnhaodd y SEPO:S nad oedd unrhyw ysgolion Sir Ddinbych ym mandiau is 4 a 5 yn 2013. Roedd sgôr bandio gyfartalog yr ALI yn rhoi Sir Ddinbych y pumed yng Nghymru yn 2013 i lawr o ail yn 2012. Y dangosydd perfformiad ar gyfer ôl-16 oedd Trothwy

Lefel 3, a oedd wedi parhau'n ddigyfnewid ar 96.8% am y tair blynedd diwethaf, yn uwch na chyfartaledd Cymru o 96.5% ac yn rhoi Sir Ddinbych y nawfed yng Nghymru. Roedd canlyniadau Lefel A wedi gwella yn ysgolion uwchradd Sir Ddinbych fel y manylir yn Atodiad 2 i'r adroddiad.

Roedd nifer disgyblion Sir Ddinbych a oedd wedi'u cofrestru ar gyfer cymwysterau ôl-16 wedi cynyddu yn 2013 i 463 o'u cymharu â 439 yn 2012. Roedd y gwelliant yng nghanlyniadau CA4 a gwaith partneriaeth ôl-16 wedi cyfrannu at y cynnydd hwn. Roedd myfyrwyr Chweched y Rhyl wedi cyflawni 94% ar gyfer Trothwy Lefel 3 o'u cymharu â 97% o ddisgyblion o ysgolion uwchradd Sir Ddinbych. Fodd bynnag, nid oedd y canlyniadau hyn wedi cyfrannu at ddangosyddion yr ALL.

Darparwyd yr ymatebion canlynol gan y swyddogion i gwestiynau a materion a godwyd gan Aelodau:-

- Ymatebodd y SEPO:S a'r PA i bryderon a godwyd gan y Cynghorydd G. Sandilands ac esboniodd y rhesymau dros y dirywiad mewn cyrhaeddiad yn Ysgol Uwchradd Prestatyn. Cadarnhawyd bod gostyngiad wedi'i ragweld, a bod cymorth ychwanegol wedi ei ddarparu i'r ysgol i liniaru'r risg. Fodd bynnag, roedd y dirywiad wedi bod yn fwy na'r disgwyl. Serch hynny roedd y swyddogion yn hyderus y byddai gwelliannau o ran canlyniadau yn cael eu cyflawni drwy weithio'n agos gyda'r Pennaeth.
- Hysbyswyd yr Aelodau bod y dull Her Llundain yn cael ei ddefnyddio o fewn ysgolion y sir fel ag yr oedd ymgynghorwyr, gyda'r bwriad o weithio gyda Phenaethiaid a Phenaethiaid Adrannau i gyflawni gwelliannau cyflym.
- Cyfeiriodd y Cynghorydd D. Owens at y gwelliannau yn Ysgol Uwchradd y Rhyl. Eglurodd y PA fod yr Ysgol wedi bod yn uchelgeisiol a bod llawer o'r llwyddiant a gyflawnwyd wedi deillio o arweinyddiaeth y Pennaeth a gwaith effeithiol yr Ysgolion Cynradd yn ardal y Rhyl.
- Esboniodd SEPO:S bod y problemau a gafwyd yn St Ffraid, Dinbych, gan arwain at ostyngiad o 7%, wedi deillio o faterion yn ymwneud â mathemateg. Cyfeiriodd at y gwaith cymwys a wnaed gan y Pennaeth Dros Dro a'r gefnogaeth a ddarparwyd ar gyfer yr ysgol, yn enwedig yr Uwch Dîm Arweinyddiaeth.
- Mynegodd y Cynghorydd C. Hughes bryder am yr ystadegau meincnodi mewn perthynas ag Ysgol Uwchradd Dinbych. Eglurodd y PA bod meysydd sy'n peri pryder yn Ysgol Uwchradd Dinbych yn ymwneud â materion cwricwlwm hanesyddol. Cadarnhawyd bod y Pennaeth wedi gweithio'n agos gyda Phenaethiaid yr ysgolion cynradd porthi i gymryd y camau priodol i wella safonau a'r dangosyddion perthnasol.
- Cyfeiriodd Dr D. Marjoram at y gwaith da sy'n cael ei wneud yn yr ysgolion arbennig o ran canlyniadau arholiadau a chymwysterau a gyflawnwyd. Fodd bynnag, mynegodd bryder nad oedd gan Lywodraeth Cymru (LIC) unrhyw fethodoleg ar gyfer graddio ysgolion arbennig.
- Mewn ymateb i faterion a godwyd gan yr Aelodau, gofynnodd y Pwyllgor am ddata, ar ffurf adroddiad gwybodaeth, ar ganlyniadau arholiadau ac asesiadau athrawon ar ddisgyblion sy'n mynychu Ysgolion Arbennig y Sir, disgyblion ag anghenion dysgu ychwanegol sy'n mynychu addysg prif ffrwd, disgyblion a addysgir yn y cartref, plant/ pobl ifanc a leolir y tu allan i'r Sir, a'r rhai sy'n mynychu ysgolion arbenigol y tu allan i'r Sir.

Ymatebodd y Cynghorydd E.W. Williams i gwestiwn gan y Cynghorydd G. Sandilands a rhoi manylion am y ddarpariaeth cyllid arfaethedig ar gyfer gwasanaethau addysg yng ngoleuni'r toriadau yn y gyllideb. Cyfeiriodd at y ddarpariaeth yn y gyllideb i ddiogelu gwelliant tymor hir mewn ysgolion a thynnodd sylw at y pwysigrwydd a'r angen i fonitro a chynnal perfformiad yn ysgolion Sir Ddinbych.

Yn dilyn trafodaeth fanwl:

**PENDERFYNWYD** - bod y Pwyllgor:-

- (a) yn amodol ar sylwadau'r Aelodau, yn derbyn a nodi cynnwys yr adroddiad.
- (b) gofyn am ddata, ar ffurf adroddiad gwybodaeth, ar ganlyniadau arholiadau ac asesiadau athrawon ar ddisgyblion sy'n mynychu Ysgolion Arbennig y Sir, disgyblion ag anghenion dysgu ychwanegol sy'n mynychu addysg prif ffrwd, disgyblion a addysgir yn y cartref, plant/ pobl ifanc a leolir y tu allan i'r Sir, a'r rhai sy'n mynychu ysgolion arbenigol y tu allan i'r Sir a
- (c) llongyfarch staff addysg a disgyblion ar y canlyniadau a gyflawnwyd.

## **7 DATA LLEOEDD YSGOL**

Roedd copi o adroddiad gan y Pennaeth Cwsmeriaid a Chymorth Addysg (HCES), a oedd yn rhoi gwybodaeth am leoedd i ddisgyblion, rhagamcanion y dyfodol, cyflwr ac addasrwydd ysgolion a'r nifer o unedau symudol sy'n cael eu defnyddio ar hyn o bryd, wedi ei ddsbarthu gyda'r papurau ar gyfer y cyfarfod.

Eglurodd Rheolwr y Rhaglen: Moderneiddio Addysg ( PM: ME) bod defnyddio'r Fframwaith Polisi Moderneiddio Addysg wedi arwain y Cyngor i wneud nifer o benderfyniadau anodd ynglŷn â dyfodol nifer o ysgolion.

Cymeradwyodd y Cyngor ei Gynllun Corfforaethol ym mis Hydref, 2012, a oedd yn cynnwys yr ymrwymiad i "Wella Perfformiad mewn Addysg ac Ansawdd ein Adeiladau Ysgolion". Roedd yr ymrwymiad hwn yn cynnwys cynigion cyllid i fuddsoddi tua £96m yn ystâd yr ysgol i wella ansawdd adeiladau ysgol. Sefydlwyd Rhaglen Moderneiddio Addysg glir ym mis Rhagfyr 2012 gyda'r nod o gyflwyno'r uchelgais hwn. Roedd manylion am sut byddai'r Rhaglen yn cael ei chyflwyno, y sefyllfa bresennol o ran lleoedd gwag a niferoedd mewn ysgolion, gwybodaeth am brosiectau Ysgolion yr 21ain Ganrif a ariennir a meysydd blaenoriaeth eraill wedi eu cynnwys yn yr adroddiad a'r atodiadau cysylltiedig.

Byddai'r Cynllun Corfforaethol o bosibl yn caniatáu i £23miliwn pellach gael ei fuddsoddi tuag at weithredu canfyddiadau adolygiadau ardal a phrosiectau adeiladau ysgolion eraill a gwaith gwella. Nid oes unrhyw benderfyniadau wedi eu gwneud ynghylch lle y byddai'r buddsoddiad hwn yn cael ei wneud.

Darparwyd yr ymatebion canlynol gan y PM:ME i gwestiynau a materion a godwyd gan Aelodau:-



- Darparwyd manylion ar y defnydd a chael gwared yn y dyfodol ar ystafelloedd dosbarth symudol ac unrhyw oblygiadau ariannol cysylltiedig. Eglurodd y Cynghorydd E.W. Williams fod LIC wedi nodi ei fwriad i gosbi awdurdodau am ddefnyddio ystafelloedd dosbarth symudol.
- Dwedodd y PM:ME nad oedd y ddwy ysgol arbennig wedi eu rhestru oherwydd y gwahanol fethodoleg a'r meini prawf a ddefnyddir ar gyfer asesu lleoedd i ddisgyblion yn yr ysgolion hynny.
- Awgrymodd y Cynghorydd E.W. Williams bod yr Aelodau yn gofyn am eglurhad gan y AC priodol ynghylch dynodi ysgolion arbennig rhanbarthol, gan gyfeirio'n benodol at effaith bosibl yr adolygiadau ffiniau arfaethedig a'r goblygiadau posibl ar gyfer darparu gwasanaeth yn Ysgol Plas Brondyffryn, Dinbych.
  - Eglurodd y PM:ME byddai'r rhagamcanion cyfradd genedigaethau yn cael eu hadolygu gan gynnwys yr heriau a gyflwynir gan y duedd bresennol ar i fyny a ffactoreiddio yn natblygiad y Cynllun Datblygu Lleol (CDLI).
  - Amlinellodd y Cynghorydd E.W. y ffactorau a'r ystadegau a ystyriwyd mewn perthynas â maint ysgolion gwledig. Cyfeiriodd at strategaeth ariannu'r Awdurdod y byddai'n rhaid ei dilyn pe byddai darpariaeth gyllid yn cael ei sicrhau gan LIC yn y dyfodol ar gyfer prosiectau sydd ar y gweill.
  - Amlygwyd yr anawsterau mewn perthynas â dosbarthu ysgolion Saesneg, Cymraeg a dwyieithog gan y Cynghorydd E.W. Williams. Cyfeiriodd y PM:ME at y gwaith a wnaed gan Grŵp Strategol Cymru mewn perthynas â darparu sicrwydd ansawdd o ran dosbarthiad ysgolion.
  - Mewn ymateb i bryderon a fynegwyd gan y Cynghorydd C. Hughes ynghylch â'r capasiti arfaethedig yn ardal Dinbych, cyfeiriodd y Cynghorydd E.W. Williams at y Cynllun Cyfalaf a oedd yn darparu potensial ar gyfer buddsoddi ar gyfer darparu cyfleusterau addysg gwell ym mhob ardal.
  - Mewn ymateb i faterion a godwyd, cytunodd y Pwyllgor y byddai adroddiad gwybodaeth pellach yn cael ei ddarparu yn manylu ar gyflwr ystâd ysgolion y Sir.

Yn dilyn trafodaeth bellach:-

### **PENDERFYNWYD -**

*(A) derbyn yr adroddiad, yn amodol ar sylwadau'r Aelodau yn nodi'r sefyllfa a'r camau sy'n cael eu cymryd fel rhan o'r Cynllun Corfforaethol i wella cyflwr cyffredinol yr ysgolion yn Sir Ddinbych, a*

*(B) bod adroddiad gwybodaeth pellach yn cael ei darparu yn manylu ar gyflwr ystâd ysgolion y Sir.*

## **8 PERFFORMIAD SIR DDINBYCH AR FATERION TIPIO ANGHYFREITHLON**

Roedd copi o adroddiad gan y Pennaeth Gwasanaethau Prifffyrdd ac Amgylcheddol (HHES), a oedd yn nodi sut caiff tipio anghyfreithlon ei adrodd a'i drin yn Sir Ddinbych, wedi ei ddsbarthu gyda'r papurau ar gyfer y cyfarfod.

Darparodd y Rheolwr Prosiect: Canolbwynt Gogledd Ddwyrain (PMNEH) gyflwyniad ac esboniodd y rhesymau am yr adroddiad fel y nodwyd yn yr adroddiad ei hun.

Cyfoeth Naturiol Cymru (CNC) oedd yn gweinyddu'r gronfa ddata 'Flycapture' yr oedd holl Gynghorau Cymru yn bwydo eu hystadegau tipio anghyfreithlon iddi. CNC oedd yn rhagnodi'r gweithdrefnau ar gyfer cyflwyno'r data, gan gynnwys beth ddylid, ac na ddylid, gael ei gyfrif fel digwyddiad tipio anghyfreithlon. Fodd bynnag, roedd cynghorau unigol yn parhau i ddefnyddio gwahanol dulliau i gasglu a phrosesu eu hystadegau eu hunain, ac roedd hyn yn effeithio ar gymaroldeb y data a gyhoeddwyd. Mae enghreifftiau o'r ffyrdd gwahanol y mae cynghorau unigol yn cofnodi eu digwyddiadau tipio anghyfreithlon wedi eu cynnwys yn yr adroddiad.

Ymatebodd yr Uwch Swyddog Troseddau Amgylcheddol (SECO) i gwestiynau gan Aelodau ac eglurodd mai dim ond y gwahanol dulliau casglu a phrosesu data a ddefnyddir gan gynghorau allai egluro'r amrywiadau enfawr yn nifer y digwyddiadau a gofnodwyd, fel y manylwyd yn yr adroddiad. Ni ellid egluro'r amrywiadau hyn gan wahaniaethau demograffig na gwahaniaethau ymddygiad a arsylwyd. Cadarnhaodd fod y Tîm Troseddau Amgylcheddol wedi cydnabod y ffenomenon ac wedi pwysu ar CNC am drefn adrodd fwy cyson. Os nad yw cynghorau yn casglu data mewn modd cyson, ni fyddai adroddiad blynyddol CNC yn dangos cymariaethau tebyg, ac efallai byddai'r defnydd o ystadegau fel mesur perfformiad yn ddiffygiol. Roedd cymhariaeth â chynghorau eraill Gogledd Cymru wedi cael eu hymgorffori yn yr adroddiad.

Roedd digwyddiadau Sir Ddinbych ar gyfartaledd tua 2 i 2.5 gwaith yn uwch na'r niferoedd a oedd yn cael eu hadrodd gan gynghorau eraill Gogledd Cymru gan fod Sir Ddinbych yn fwriadol ceisio nodi pob un digwyddiad o wastraff sy'n cael ei dipio'n anghyfreithlon, bod hynny ar dir cyhoeddus neu breifat, a prun a'i pheidio yr oedd yn cael ei adrodd gan aelod o'r cyhoedd. Roedd cyfraddau adrodd uchel yn cael ei ystyried fel rhagofyniad ar gyfer lleihau gweithgaredd tipio anghyfreithlon gwirioneddol a oedd yn egwyddor bwysig.

Roedd manylion yn ymwneud â thueddiadau hanesyddol Sir Ddinbych wedi ei gynnwys yn yr adroddiad. Eglurodd y SECO byddai'r Tîm Gorfodaeth tipio anghyfreithlon yn hoffi symud o system CRM y Cyngor i symud gofnodi ddaearyddol. Byddai hyn yn symleiddio'r dulliau o brosesu'r holl faterion strydlun ac yn helpu gyda'r dadansoddiad o ddigwyddiadau yn ôl lleoliad, a fyddai'n darparu ar gyfer targedu gorfodaeth yn fwy effeithiol. Roedd CNC hefyd wedi mynegi awydd i symud i system ddaearyddol ac ar hyn o bryd yn datblygu 'ap' i gynorthwyo gyda hyn.

Amlygodd y SECO yr angen i wella categorieiddio digwyddiadau ac i ynysu achosion o dipio anghyfreithlon gwirioneddol, a'r rhai yr oedd gan y Cyngor ddyletswydd i'w glanhau. Roedd hyn ar hyn o bryd yn cael ei wneud drwy ddadansoddiad eilaidd unigol, y teimlwyd y dylai fod yn rhan o brosesau CRM arferol y Cyngor.

Amlinellwyd pwysigrwydd Strategaeth Gorfodaeth Sir Ddinbych ac roedd yr ymchwiliadau a/ neu erlyniadau dilynol wedi arwain at effaith ataliol sylweddol, a gafodd ei ystyried i fod yn ffactor hollbwysig wrth wneud Sir Ddinbych yn sir lân a dymunol.

Llongyfarchodd a diolchodd y Cadeirydd ac Aelodau'r Pwyllgor i'r Tîm Amgylchedd am y gwaith a wnaed ac yna:

**PENDERFYNWYD** - yn amodol ar sylwadau'r Aelodau, bod y Pwyllgor: -

(a) yn cefnogi dull cyfredol y Cyngor o gofnodi digwyddiadau tipio anghyfreithlon;

(b) cefnogi parhau â pholisi'r Cyngor o orfodaeth drylwyr ar faterion tipio anghyfreithlon;

(c) cefnogi'r cynnig dylai Sir Ddinbych barhau i lobïo Cyfoeth naturiol Cymru ynglŷn ag ansawdd y data 'Flycapture' sy'n cael ei gasglu ar draws Cymru; a

(d) cytuno bod Cadeirydd y Pwyllgor yn ysgrifennu at Gadeirydd Cyfoeth Naturiol Cymru yn ailadrodd pryderon y Pwyllgor mewn perthynas ag ansawdd a dibynadwyedd data 'Flycapture', a bod y Pennaeth Archwilio Mewnol hefyd yn mynegi pryderon y Pwyllgor gyda swyddogion perthnasol Cyfoeth Naturiol Cymru.

## 9 RHAGLEN WAITH Y PWYLLGOR ARCHWILIO

Roedd copi o adroddiad gan y Cydlynnydd Archwilio, a oedd yn gofyn i'r Pwyllgor adolygu a chytuno ar ei Raglen Gwaith i'r Dyfodol ac yn rhoi diweddariad ar faterion perthnasol, wedi ei ddisbarthu gyda'r papurau ar gyfer y cyfarfod. Roedd Rhaglen Waith i'r Dyfodol y Cabinet wedi'i chynnwys fel Atodiad 2 ac roedd tabl yn crynhoi penderfyniadau diweddar y Pwyllgor, a chynghori ar eu cynnydd â'u gweithredu, wedi'i atodi yn Atodiad 3 i'r adroddiad.

Roedd Grŵp Cadeiryddion ac Is-gadeiryddion Archwilio wedi cyfarfod ar 9 Ionawr 2014 ac wedi cael cais i ystyried adroddiad mewn perthynas â'r Rhaglen Moderneiddio Addysg. Cytunodd yr Aelodau bod yr eitem hon yn cael ei chynnwys yn Rhaglen Waith y Pwyllgor i'w hystyried yng nghyfarfod mis Chwefror 2014, a bod yr Aelod Arweiniol, y Cynghorydd E.W. Williams, yn cael gwahoddiad i fod yn bresennol.

Ar ôl ystyried ei Raglen Gwaith i'r Dyfodol ddrafft ar gyfer cyfarfodydd yn y dyfodol, cytunodd y Pwyllgor y dylid gwneud y diwygiadau ac ychwanegiadau canlynol: -

**Mawrth 20, 2014:** - Sefydliadau Hyd Braich - Cytunodd yr Aelodau, o ystyried y gwaith a wneir gan Archwilio Mewnol bod Adroddiad Gwybodaeth yn cael ei gyflwyno i'r Pwyllgor ym mis Mawrth 2014, gydag adroddiad pellach yn cael ei gynnwys yn y Rhaglen Gwaith i'r Dyfodol ar gyfer mis Mehefin neu Orffennaf 2014.

Cyfeiriodd y Cynghorydd C. Hughes at Dudalen 2 o'r Diweddariad Gwybodaeth, Datblygu'r Economi Lleol. Eglurodd, o ran Canlyniad 5, bod gwybodaeth fwy diweddar ar gael mewn perthynas â ffigyrau incwm canolrif a'r ffigurau cyfrif hawlwr (data ar gyfer canran y LSOA).

Gofynnodd yr Aelodau hefyd bod ystyriaeth yn cael ei rhoi i gynnal cyfarfodydd yn y dyfodol mewn lleoliadau ar draws y Sir.

**PENDERFYNWYD** - yn amodol ar y newidiadau a chytundebau uchod, cymeradwyo'r Rhaglen Gwaith i'r Dyfodol fel y nodir yn Atodiad 1 i'r adroddiad.

## **10 ADBORTH GAN GYNRYCHIOLWYR Y PWYLLGOR**

Cadarnhaodd y Cadeirydd ei fod ef a'r Cynghorydd D. Owens wedi mynychu cyfarfodydd y Grŵp Monitro Safonau Ysgolion (SSMG).

Eglurodd y Cynghorydd G. Lloyd-Williams ei fod wedi mynychu Her Gwasanaeth ar gyfer y Gwasanaeth Cyfathrebu, Marchnata a Hamdden yn ddiweddar.

Gorffennodd y cyfarfod am 12.35pm.

<b>Adroddiad i'r:</b>	<b>Pwyllgor Archwilio Perfformiad</b>
<b>Dyddiad y Cyfarfod:</b>	<b>20 Chwefror 2014</b>
<b>Aelod/Swyddog Arweiniol:</b>	<b>Aelod Arweiniol Addysg / Pennaeth Cwsmeriaid a Chefnogaeth Addysg</b>
<b>Awdur yr Adroddiad:</b>	<b>Aelod Arweiniol Addysg</b>
<b>Teitl:</b>	<b>Rhaglen Moderneiddio Addysg - Adolygiad Gateway</b>

---

## **1. Am beth mae'r adroddiad yn sôn?**

Rhoi gwybod i'r Aelodau am ganfyddiadau Adolygiad Gateway yn Rhaglen Moderneiddio Addysg Sir Ddinbych ac i dderbyn diweddariad cyffredinol ar gynnydd presennol y prosiectau unigol.

## **2. Beth yw'r rheswm dros lunio'r adroddiad hwn?**

I sicrhau'r Aelodau ynglŷn â chynnydd yn erbyn y Blaenoriaeth allweddol hon i'r Cyngor.

## **3. Beth yw'r Argymhellion?**

I wneud sylwadau ar ganfyddiadau Adolygiad Gateway ac i roi sylwadau ar y cynnydd yn gyffredinol yn erbyn y blaenoriaeth allweddol hwn i'r Cyngor.

## **4. Manylion am yr adroddiad**

### **Cyflwyniad**

- 4.1 Fel rhan o'r broses o drosglwyddo Cynllun Corfforaethol y Cyngor, mae'r ffrwd waith ar gyfer y flaenoriaeth o wella perfformiad mewn addysg ac ansawdd adeiladau ein hysgolion wedi'i ddatblygu i fod yn rhaglen eglur o waith. Mae'r prosiectau presennol sy'n rhan o'r ffrwd waith hon yn cynnwys y prif brosiectau cyfalaf a'r cynigion trefniadaeth ysgolion. Mae trafodaethau gyda Llywodraeth Cymru wedi nodi'r manteision o gynnal Adolygiad Gateway ar y ffrwd waith hon er mwyn rhoi rhywfaint o sicrwydd ynghylch y mesurau sydd ar waith i reoli'r rhaglen hon.

### **Adolygiad Gateway**

- 4.2 Cynhaliwyd Adolygiad Gateway ffurfiol ar Raglen Moderneiddio Addysg Sir Ddinbych rhwng 16 a 18 Medi. Dyma tîm annibynnol yr Adolygiad Gateway a gomisiynwyd gan Lywodraeth Cymru yn cyfweld ag ystod o bersonél allweddol sy'n rhan o'r Rhaglen Moderneiddio Addysg.
- 4.3 Mae'r system adolygu yn darparu pum categori o farn yn amrywio o Wyrdd, Melyn / Gwyrdd, Melyn, Melyn / Coch a Coch. Yr asesiad trosglwyddo hyder

yn gyffredinol yn yr adolygiad oedd Melyn / Gwyrdd – Mae trosglwyddo'n llwyddiannus yn ymddangos yn debygol ond bydd angen sylw cyson i sicrhau na chaiff y risgiau eu gwireddu yn faterion o bwys sy'n bygwth y trosglwyddiad.

#### **Canfyddiadau ac Argymhellion o'r Adolygiad**

4.4 Sylwadau'r adolygiad (gweler Atodiad 1) yn gryno fel a ganlyn: -

“Mae Cyngor Sir Ddinbych yn ymroddedig i barhau i godi safonau addysgol yn y Sir ac i wneud y buddsoddiad sydd ei angen. Mae cyfansoddiad Fframwaith y Rhaglen Moderneiddio Addysg (MEPF) yn adlewyrchu canlyniadau cyfres o adolygiadau strwythuredig ar feysydd o ddarpariaeth addysg yn y Sir. Penderfyniadau yn dilyn ymgynghori ffurfiol ac anffurfiol dwys ac ymgysylltu. Costau ac amserlenni yn cael eu rheoli'n llym, er bod amseriad a fforddiadwyedd yn cael eu heffeithio gan y broses o wneud penderfyniadau yn Llywodraeth Cymru.

Rhaglen a'r broses o lywodraethu'r prosiect yn eu lle (er nad yw'r cyntaf wedi'i ddatblygu'n llwyr eto). Cyngor Sir Ddinbych yn cymryd y broses o reoli rhaglen o ddifrif ac mae profiad, gallu ac arbenigedd yn yr uwch dîm presennol. Mae'r tîm addysg, gan weithio'n agos â'r Rhaglen wedi ymrwymo i ddatblygu a gwella sgiliau'r gweithlu ysgolion.

Yr ansicrwydd ynghylch cyllid yn y dyfodol yw'r risg unigol mwyaf i'r Rhaglen ac, fel mewn mannau eraill, mae rhaglen ysgolion Sir Ddinbych wedi'i effeithio gan benderfyniadau gwahanol ar y cyfanswm, amseriad a natur y gefnogaeth ariannol gan Lywodraeth Cymru. Gan edrych ymlaen, mae cyllid llywodraeth leol yn debygol o gael ei leihau ymhellach ac mae Sir Ddinbych yn ystyried sut y gellir lliniaru'r effaith hyn ar ei raglen buddsoddi mewn ysgolion.

Mae amcanion polisi clir ar gyfer y Rhaglen ond byddai datganiad gweledigaeth gyffredinol sy'n nodi beth fyddai'r dyfodol yn edrych fel yn ddefnyddiol. Er bod yr adolygiadau ardal yn darparu sail gadarn ar gyfer y Rhaglen, nid oes mynegiant clir o sut y mae'r canfyddiadau o'r ardaloedd unigol – a'r weledigaeth ar gyfer pob un a fydd yn deillio o'r gwaith hwnnw - yn cael ei adlewyrchu ar lefel rhaglen. Er bod manteision caled a meddal wedi'u nodi ar lefel prosiect, mae'r gwaith o ddod â'r rhain at ei gilydd ar lefel rhaglen yn dal i gael ei ddatblygu. Yn benodol, mae angen casglu dangosyddion o gyfraniad y Rhaglen i'r canlyniadau addysgol yn y Sir.

4.5 Dyma'r adolygiad yn gwneud pedair prif argymhelliad sydd i'w gweld isod: -

Cyf Rhif	Argymhelliad	Critigol / Hanfodol/ Argymhellir
1.	<b>Mae'r ddogfen Diffinio Rhaglen angen cynnwys datganiad gweledigaeth a datganiad clir ar gyfer cwmpas ac amserlen y rhaglen. Dylai'r ddogfen gael ei adolygu'n rheolaidd a'i ddiweddarau.</b>	Hanfodol. Erbyn Mawrth 2014
2.	<b>Dylai'r rhaglen sicrhau bod matrices cynhwysfawr a matrices mesur manteision sy'n cydgrynhai, gan adeiladu ar y gwaith ar lefel prosiect a chynnwys y manteision ar lefel ardal a rhaglen. Yn ogystal, dylai'r gwaith adnabod, casglu ac olrhain greu ysylltiadau ar gyfer manteision y Rhaglen, a dylai canlyniadau addysgol fod yn faes o flaenoriaeth ar gyfer cam nesaf y Rhaglen.</b>	Hanfodol. Erbyn Mawrth 2014
3.	<b>Dylai cofrestr lefel risg y Rhaglen gael ei ddatblygu i fod yn brif offeryn rheoli risg Bwrdd y Rhaglen.</b>	Hanfodol. Erbyn diwedd Hydref 2013
4.	<b>Dylai'r Rhaglen sefydlu proses ar gyfer gwerthuso canlyniadau yr adolygiadau o feysydd gwahanol.</b>	Hanfodol. Erbyn Mawrth 2014

4.6 At ei gilydd mae canfyddiadau'r adolygiad yn awgrymu bod y Rhaglen mewn sefyllfa gref i gyflawni'r canlyniadau a fwriedir. O ran argymhelliad 3 cyflwynwyd cofrestr lefel risg wedi'i ddiweddarau ar gyfer y Rhaglen yng nghyfarfod Bwrdd y Rhaglen ym mis Hydref 2013. Ar gyfer y tri argymhelliad sy'n weddill bydd Rheolwr y Rhaglen yn gorfod arwain ar y darnau hyn o waith ac yn gorfod adrodd yn ôl ar y cynnydd i Fwrdd y Rhaglen Moderneiddio Addysg ym mis Mawrth.

#### **Cynnydd cyffredinol yn erbyn y Rhaglen**

4.7 Mae'r cynnydd cyfredol yn erbyn y Rhaglen yn cael ei asesu ar hyn o bryd drwy brosesau her fewnol fel Adroddiadau Perfformiad Chwarterol a Bwrdd y Rhaglen Moderneiddio Addysg. I wneud i'r Pwyllgor ddeall yr amrywiaeth a geir yn y rhaglen gyfredol mae Atodiad 2 yn rhoi crynodeb o gwmpas a chynnydd y prosiectau unigol ar hyn o bryd.

#### **5. Sut mae'r penderfyniad yn cyfrannu at Flaenoriaethau Corfforaethol?**

Mae'r ffrwd waith hon yn cyfrannu'n uniongyrchol at y flaenoriaeth yn y Cynllun Corfforaethol - "Gwella Perfformiad mewn Addysg a Ansawdd ein Adeiladau Ysgolion" Mae'r ymrwymiad hwn yn cynnwys cynigion cyllid i fuddsoddi tua £96miliwn yn ystadau ysgolion i wella ansawdd adeiladau ysgol.

#### **6. Beth fydd yn ei gostio a sut bydd yn effeithio ar wasanaethau eraill?**

Disgwylir i'r gost gyffredinol o ddarparu'r Rhaglen fod yn oddeutu £96m. O'r swm hwn caiff £73.4 ei ariannu fel rhan o Raglen Ysgolion yr 21ain Ganrif, gyda 50% ohono'n dod yn uniongyrchol gan Lywodraeth Cymru.

**7. Beth yw prif gasgliadau'r Asesiad o Effaith ar Gydraddoldeb a gwblhawyd ar gyfer y penderfyniad? Dylai'r templed Asesiad o Effaith ar Gydraddoldeb wedi'i lenwi gael ei gynnwys fel atodiad i'r adroddiad.**

Mae'r adroddiad hwn ar gyfer gwybodaeth.

**8. Pa ymgynghori a gwblhawyd gydag Archwilio ac eraill?**

Lluniwyd yr adroddiad yn dilyn trafodaethau gyda'r Grŵp Cadeiryddion ac Is-Gadeiryddion ac ar hyn o bryd nid oes unrhyw ymgynghori pellach wedi digwydd.

**9. Pa risgiau sy'n bodoli ac a oes unrhyw beth y gallwn ei wneud i'w lleihau?**

Y risg nad yw argaeledd cyfraniad arian cyfatebol Llywodraeth Cymru ar gael ar gyfer Band A o raglen Ysgolion yr 21ain Ganrif yn unol â'r amserlenni ar gyfer rhaglen waith Sir Ddinbych sydd ar hyn o bryd yn cael ei reoli fel rhan o'r Gofrestr Risg Corfforaethol cyffredinol. Mae'r gofrestr risg ar wasanaeth i Gwsmeriaid a Chymorth Addysg hefyd yn cynnwys nifer o risgiau a chamau lliniaru ar gyfer y Rhaglen Moderneiddio Addysg ehangach. Mae cofrestr risg hefyd yn cael ei gynnal gan Fwrdd y Rhaglen, ac mae prosiectau unigol hefyd yn rheoli cofrestrau risg ar lefel prosiect. Mae'r rhain yn cael eu hadolygu yn rheolaidd.

**10. Pŵer i wneud y Penderfyniad**

Erthygl 6.3.4 (b) o Gyfansoddiad y Cyngor yn amlinellu pwerau craffu mewn perthynas ag archwilio perfformiad mewn perthynas ag amcanion polisi.

**Swyddog Cyswllt:**

Rheolwr y Rhaglen – Moderneiddio Addysg

Ffôn: 01824 706254





Office of Government Commerce

Version 4.0 (High Risk Delivery Confidence) June 2008

© Crown Copyright 2007

This is a Value Added product, which is outside the scope of the HMSO core Licence

## **OGC Gateway™ Process** **Review 0: Strategic assessment**

**Version number:** Final

**Date of issue:** 18 September 2013

**SRO:** Hywyn Williams

**Department:** Learning and Community Directorate, Denbighshire County Council

**Agency or NDPB:** Mae tudalen hwn yn fwriadol wag

**OGC Gateway™ Review dates:** 16 Sept 2013 to 18 Sept 2013

---

**OGC Gateway™ Review Team Leader:**

Liz McLoughlin

**OGC Gateway™ Review Team Members:**

Roger Davies

Nigel Elias

## Appendix 1 - OGC Gateway™ Review 0: Strategic assessment

Programme Title: Denbighshire Modernising Education Programme

OGC Gateway™ ID: AH/13/040/G

Privacy Marking: UNCLASSIFIED

### OGC Gateway Delivery Confidence Assessment

<b>Delivery Confidence Assessment</b>	Amber/Green
<p>Denbighshire County Council is committed to continuing to raise educational standards in the County and to making the required investment. The composition of the Modernising Education Programme Framework (MEPF) reflects the results of a series of structured area reviews of education provision in the County. Decisions follow extensive informal and formal consultation and engagement. Costs and timescales are tightly controlled, although both timing and affordability are affected by the Welsh Government decision making process.</p> <p>Programme and project governance are in place (although the former is not yet fully mature). Programme management is taken seriously by the Denbighshire County Council and there is experience, capacity and expertise in the present senior team. The education team, working closely with the Programme is committed to developing and skilling the schools workforce.</p> <p>The uncertainty of future funding is the biggest single risk to the Programme and, as elsewhere, the Denbighshire schools programme has been affected by different decisions on the amount, timing and nature of Welsh Government financial support. Looking forward, local government funding is likely to be reduced further and Denbighshire is considering how it might mitigate the effect of this on its school investment programme.</p> <p>There are clearly set out policy objectives for the Programme but an overall vision statement, setting out what the future will look like would be useful. Although the area reviews provide a sound basis for the Programme, there is as yet no clear articulation of how the findings from the individual areas- and the vision for each that will be derived from that work- will be reflected at programme level. While hard and soft benefits have been identified at project level, the work to bring these together at programme level is still being developed. In particular, there is a need to capture indicators of the Programme's contribution to educational outcomes in the County.</p>	

The Delivery Confidence assessment RAG status should use the definitions below.

<u>RAG</u>	<u>Criteria Description</u>
Green	Successful delivery of the project/programme to time, cost and quality appears highly likely and there are no major outstanding issues that at this stage appear to threaten delivery significantly
Amber/Green	Successful delivery appears probable however constant attention will be needed to ensure risks do not materialise into major issues threatening delivery
Amber	Successful delivery appears feasible but significant issues already exist requiring management attention. These appear resolvable at this stage and if addressed promptly, should not present a cost/schedule overrun
Amber/Red	Successful delivery of the project/programme is in doubt with major risks or issues apparent in a number of key areas. Urgent action is needed to ensure these are addressed, and whether resolution is feasible

## Appendix 1 - OGC Gateway™ Review 0: Strategic assessment

Programme Title: Denbighshire Modernising Education Programme

OGC Gateway™ ID: AH/13/040/G

Privacy Marking: UNCLASSIFIED

Red	Successful delivery of the project/programme appears to be unachievable. There are major issues on project/programme definition, schedule, budget required quality or benefits delivery, which at this stage do not appear to be manageable or resolvable. The Project/Programme may need re-baselining and/or overall viability re-assessed
-----	--

### Summary of Report Recommendations

The Review Team makes the following recommendations which are prioritized using the definitions below.

Ref. No.	Recommendation	Critical/ Essential/ Recommended
1.	<b>The Programme Definition document needs to include a vision statement and clear statement of scope and timescale. The document should be reviewed regularly and updated.</b>	Essential. By March 2014
2.	<b>The Programme should ensure that there is a comprehensive and consolidated benefits measurement matrix, building on the project level work and weaving benefits through area and programme level. In addition, the work to identify, capture and track linkages between Programme benefits and educational outcomes should be a priority area for the next phase of the Programme.</b>	Essential. By March 2014
3.	<b>The Programme level risk register should be developed to become the principal risk management tool for the Programme Board.</b>	Essential. By end October 2013
4.	<b>The Programme should establish a process for evaluating the results of the area reviews.</b>	Essential. By March 2014

**Critical (Do Now)** – To increase the likelihood of a successful outcome it is of the greatest importance that the programme/project should take action immediately

**Essential (Do By)** – To increase the likelihood of a successful outcome the programme/project should take action in the near future. [Note to review teams – whenever possible Essential recommendations should be linked to project milestones e.g. before contract signature and/or a specified timeframe e.g. within the next three months.]

**Recommended** – The programme/project should benefit from the uptake of this recommendation. [Note to review teams – if possible Recommended recommendations should be linked to project milestones e.g. before contract signature and/or a specified timeframe e.g. within the next three months.]

## **Appendix 1 - OGC Gateway™ Review 0: Strategic assessment**

**Programme Title:** Denbighshire Modernising Education Programme

**OGC Gateway™ ID:** AH/13/040/G

**Privacy Marking:** UNCLASSIFIED

---

### **Background**

#### **The aims of the programme:**

The Modernising Education Programme, which includes the Denbighshire County Council's input to the Welsh Government's 21<sup>st</sup> Century Schools Programme, is to ensure that education provision in the County is of a high quality and is sustainable in the long term. It seeks to improve the quality of school buildings and facilities and to provide the right number of school places, of the right type, in the right locations while reducing the cost per pupil. In addition the Programme aims to maintain or strengthen Welsh medium or bi-lingual provision.

The Programme will also contribute to the Welsh Government's target for reducing carbon emissions by 34% by 2020.

To achieve these aims the Programme has been set up to oversee a number of projects for new builds, refurbishment and extensions and, where appropriate, amalgamations, closures and disposals including the removal of mobile classrooms. Where practicable, projects will also deliver enhanced facilities for community use.

#### **The driving force for the programme:**

Some of the Denbighshire schools have surplus capacity while others are under-provided. Some, specifically in the Rhyl area, serve areas of significant deprivation. In 2007 a very challenging Estyn inspection of educational provision in the County led to a review of the performance, leadership and management and use of resources in schools. As a consequence, a number of leadership and management changes were made. In January 2009 the Cabinet approved the Modernising Education Policy Framework and from May 2009 set in place a number of area reviews of primary provision.

The Programme meets the objectives set out in the Welsh Government's Strategic Outline Programme of 2010 which supports investment designed to improve learning environments, to achieve greater economy and efficiency and to reduce the carbon footprint of the education estate. A particular driver is the target of reducing surplus capacity to 10% or less.

In addition the Programme contributes to Denbighshire County Council's regeneration and modernisation strategies.

#### **The procurement/delivery status:**

The Modernising Education Programme is composed of a number of existing and planned projects at different stages of procurement and construction. Of the two largest projects (both secondary schools), the construction of the new Rhyl school is being procured under Early Contractor Involvement arrangements. It is envisaged that the extension and refurbishment of Ysgol Glan Clwyd will be procured through a mini-competition process through the North Wales Schools and Public Buildings Contractor Framework expected to be available in January 2014.

**Current position regarding OGC Gateway™ Reviews:**

This is the first Gateway review of the Programme.

**Purposes and conduct of the OGC Gateway™ Review**

**Purposes of the OGC Gateway™ Review**

The primary purposes of an OGC Gateway Review 0: Strategic assessment, are to review the outcomes and objectives for the programme (and the way they fit together) and confirm that they make the necessary contribution to Ministers' or the departments' overall strategy.

Appendix A gives the full purposes statement for an OGC Gateway Review 0.

**Conduct of the OGC Gateway™ Review**

This OGC Gateway Review 0 was carried out from 16 September 2013 to 18 September 2013 at County Hall, Ruthin. The team members are listed on the front cover.

The people interviewed are listed in Appendix B.

The Review Team would like to thank the Modernising Education Programme team for their support and openness, which contributed to the Review Team's understanding of the Programme and the outcome of this Review. In particular we would like to thank Jacqui Pendleton for her help to the Review Team during the review.

## **Appendix 1 - OGC Gateway™ Review 0: Strategic assessment**

**Programme Title:** Denbighshire Modernising Education Programme

**OGC Gateway™ ID:** AH/13/040/G

**Privacy Marking:** UNCLASSIFIED

---

### **Findings and recommendations**

#### **1: Policy**

Following the very challenging Estyn report in 2007 and the report of Cambridge Education consultants, Denbighshire County Council put in place some significant changes to the leadership and management of educational services in the County. In parallel with these changes, the Modernising Education Policy Framework was drawn up and was approved by Cabinet in January 2009. The framework provides a suite of policies for models for primary and secondary school organisation and has been used as the basis from 2009 for a series of area reviews of education provision, the current review being of the Ruthin area.

In October 2010 Denbighshire submitted their case for Band A capital funding to the Welsh Government's 21<sup>st</sup> Century Schools Programme. The submission sought funding for a number of capital projects, the requirement for which was identified through the area reviews and agreed after the associated consultation.

The Modernising Education Programme responds to one of the priorities in the Council's Corporate Plan (Improving Performance in Education and the quality of School Buildings). It reflects Welsh Government policies for improving learning environments and educational outcomes as well as the objectives for achieving greater efficiency and economy and sustainability.

The investment needs identified by the Programme meet a number of policy objectives. These include:

- Providing high quality and sustainable education provision
- Providing the right number of the right type of places in the right place. This includes meeting the increasing demand for Welsh medium education
- Improving the quality of school buildings
- Supporting regeneration in deprived areas

#### **2: The Programme Case**

The Programme Definition Document (PDD) of 23 April is a useful document which sets out at a high level the context of the Programme, its intended outcomes and benefits, dependencies and delivery approach. It explains the governance arrangements and roles and responsibilities. The PDD is consistent with the 21<sup>st</sup> Century Schools Strategic Outline Programme submitted in 2010 and defines the programme of activities that will contribute to the Denbighshire County Council Corporate Plan priority of improving performance in education and the quality of our school buildings.

## Appendix 1 - OGC Gateway™ Review 0: Strategic assessment

Programme Title: Denbighshire Modernising Education Programme

OGC Gateway™ ID: AH/13/040/G

Privacy Marking: UNCLASSIFIED

---

The Programme as presently identified has a number of current and planned projects that have emerged from the area review process to date. All projects have project managers and the larger projects are supported by project boards. Each has produced a business justification case or, in the case of the larger projects, has produced or will produce a full business case. It is not envisaged that the Programme itself will have a business case since the case for investment will be made at project level.

The Review Team noted that the purpose of the PDD is to provide a sound basis for structured management of the Programme as a whole. It is seen as a technical document which, with the Programme governance, brings a structured and disciplined approach to project delivery. Nonetheless, it has to support the full range of the Programme Board's responsibilities.

As set out in the PDD, the Programme Board is responsible for communicating the Programme vision and its key outcomes; for managing the overall benefits; leading the cultural change; and co-ordinating projects in pursuit of the vision. The version of the PDD that the Review Team has seen does not contain a vision statement or the outline of a stakeholder and communication plan and the benefits and risk work it sets out is still generic. (We address the latter two below.) In addition the scope of the Programme, both in terms of content and timescale, could be clearer.

The Programme is more than a collection of projects. Much of its added value comes from the ability of key stakeholders at Programme level to articulate and communicate key messages - the overall vision, objectives and what will constitute success. For this reason, the Review Team recommends that the PDD, as the key Programme document, is refreshed and updated in particular to ensure that there is a single statement of vision and clarity on scope, duration and success factors.

**RECOMMENDATION 1. The Programme Definition document needs to include a vision statement and clear statement of scope and timescale. The document should be reviewed regularly and updated.**

Although the Programme will make a key contribution to improving educational outcomes, the Programme scope does not include workforce development which is being driven by the Head of Education. The Review Team was told that a high performing workforce and raising educational performance was embedded in Denbighshire's ethos. Certainly, the County's progress since 2007 has been very significant. It will be important, therefore, to maintain the close working between the Programme Team and their colleagues.

## **Appendix 1 - OGC Gateway™ Review 0: Strategic assessment**

**Programme Title:** Denbighshire Modernising Education Programme

**OGC Gateway™ ID:** AH/13/040/G

**Privacy Marking:** UNCLASSIFIED

---

### **Stakeholders and communication**

The approach to schools' modernisation taken in 2004-5 met with considerable opposition and the lessons learned from that are reflected in the present carefully structured area review approach. Given past history, informal consultation and extensive engagement are both particularly important and, in some cases, particularly difficult. The Review Team has not seen a stakeholder matrix or communications plan but from several of those to whom we spoke we heard about the considerable effort that was being devoted to this at programme level and it is clear that there is strong and joined up leadership and involvement from the top. The Review Team is also aware that stakeholder engagement is often best managed at project level in partnership with the senior management in the schools.

There may, however, be merit in reviewing at Programme level the future communications agenda to ensure that time is spent most cost-effectively, that the communications effort is making a difference and that there is shared understanding of what works best.

Communications from the Programme Team, including regular newsletters, give updates on the progress of individual projects. The Review Team suggests that the Programme Team identify and publish a number of hard objectives – key deliverables with dates. The meeting of these objectives would be celebrated at local level but could also be presented as Programme successes.

### **3: Outcomes and benefits**

The MEPF contributes to the overarching Corporate Plan priority of 'Improving performance in education and the quality of our school buildings' through its stated outcomes of:

- Significant investment to improve school buildings and facilities and improved learning environments for pupils;
- The right number of school places, of the right type, in the right location.

There is confidence among those the Review Team interviewed that the programme will provide the improved school buildings and facilities and will successfully address the surplus and over subscription issues. Linking the results of increased investment in buildings and facilities to better education performance, at County or area level, is more difficult and the whole area of benefits mapping at programme level is still work in progress.



## Appendix 1 - OGC Gateway™ Review 0: Strategic assessment

Programme Title: Denbighshire Modernising Education Programme

OGC Gateway™ ID: AH/13/040/G

Privacy Marking: UNCLASSIFIED

---

Benefits need to be mapped, managed, measured and owned at various levels. There are a number of hard and soft, but measurable, benefits being captured at the individual project level (the benefits matrix for Ysgol Bro Dyfrdwy and Glan Clwyd are good examples of work already undertaken). The Review Team was less clear, however, that these were being aggregated at area or Programme level in a way that would allow subsequent assessment of achievement against objectives at area or County level. Furthermore, the team was told that the difficult work on identifying persuasive indicators to link capital investment to a range of educational outcomes had not yet been developed although a good deal of thinking has gone into this.

There are a large number of quantifiable benefits, some of which reflect policy intentions at Welsh Government level and form criteria for approval of 21st Century Schools funding. Examples include reducing the carbon footprint of a school or the reduction of surplus places. These and others are fairly straightforward to capture and map. The better alignment of provision to need, in particular, is the fundamental driver for the area reconfiguration proposals. The majority of the benefits captured at project level will be to do with the efficiency and cost effectiveness of the new school estate. As the Programme moves, at area by area level, from construction to bedding down, an audit trail showing benefits realisation will be needed, not least to demonstrate value for money from the investments.

In the more testing area of demonstrating the linkage between investment in buildings and educational outcomes, the use of indicators may offer a way forward. Indicators might include measuring reduction in truancy and expulsions, the decrease in pupil transfers in year, fewer parental complaints, analysis of pupil and teacher satisfaction surveys and increase in staff development undertaken. Because of the differences in catchment areas and the differences in cohorts from one year to another, this analysis can only sensibly be done at Programme level and will be indicative of trends rather than end results. Nevertheless, this work, which will be in close consultation with, or led by, colleagues in education services, should present a persuasive picture of the linkage between the learning environment and the behaviour and performance of staff and pupils. The use of benefit mapping tools such as Service Value Chains and working back from the outcome may be of use.

**RECOMMENDATION 2. The Programme should ensure that there is a comprehensive and consolidated benefits measurement matrix, building on the project level work and weaving benefits through area and programme level. In addition, the work to identify, capture and track linkages between Programme benefits and educational outcomes should be a priority area for the next phase of the Programme.**

## **Risk Management**

The Programme Definition Document lists the overall generic risks associated with the delivery of the Programme. Detailed risk registers are maintained at project level and are reported to the Programme and Programme Board through VERTO. The PDD also outlines the Programme risk management strategy including how risks are to be escalated.

There is general consensus and commitment to the governance framework and procedures for risk management and there is clear support and involvement from the senior management team and elected Members in scrutinising risk issues.

It is also apparent that risk escalation procedures are in place, as individual project risk issues are discussed regularly with the Modernising Education Programme Manager and raised at the Programme Board for discussion, challenge and resolution.

If, however, the Programme Team, and Board, are to manage programme level risks effectively (rather than monitoring project level risks), a worked through programme level register needs to be developed. This is acknowledged in the PDD.

The chief risk facing the Programme is the uncertainty of funding and the Programme and senior team are developing contingency and mitigating actions.

A further risk, identified in the Review Team's interviews, but not identified in the documentation before the Team, concerns the provision of ICT. Realising the educational benefits of capital investment in buildings will depend to a significant degree on whether they are equipped with the right ICT infrastructure, equipment and services. The current project to equip all schools with WiFi forms part of the Modernising Education Programme and needs to be considered within the overall management of risk at Programme level, recognising, however, that this is a key dependency for individual projects.

**RECOMMENDATION 3. The Programme level risk register should be developed to become the principal risk management tool for the Programme Board.**

## **5: Review of Current Phase**

The current phase of the Council's Modernising Education Programme 2012 – 2017 is defined as the list of completed and current capital build projects, namely;

## Appendix 1 - OGC Gateway™ Review 0: Strategic assessment

Programme Title: Denbighshire Modernising Education Programme

OGC Gateway™ ID: AH/13/040/G

Privacy Marking: UNCLASSIFIED

---

- Ysgol Dyffryn Ial
- Ysgol y Llys
- Ysgol Twm o'r Nant
- Ysgol Bro Dyfrdwy
- Rhyl High School
- Bodnant Community School

This reflects progress across both the Tranche 3 and the 21st Century Schools funded projects.

The documentation seen by the Review Team showed that that these projects are on target and this was confirmed by interviewees. Project plans are up to date and issues are being managed effectively. There was, however, a delay in approval of the SOC for the new Rhyl School by the Welsh Government, due, we understand, to a failure of communication over the evidence for pupil projection numbers and this has led to the need for a revised submission. Confidence that this will now be approved by Welsh Government is high.

The progress in the present phase of the Programme has benefited from a number of strengths. These include:

- Confidence in the capacity and capability of the Programme Team. Interviewees praised the support they had from the team.
- Experienced project managers who are well thought of by Heads and Governors.
- The clarity and joined up approach that has been enhanced by the establishment of the Programme Board. The Board is seen as providing both a more structured approach and a forum for open discussion,
- The re-engagement of Wilmott Dixon, the contractor partner on the Rhyl project

In addition, the culture and ethos of Denbighshire County Council encourages a joined up, structured and robust approach. Examples of this are the Corporate Programme Office and the Schools Standards Monitoring Group.

It has, however, been difficult to plan, to commit to investment and to assure value for money when there has been such uncertainty over the level and timing of Welsh Government funding. The change of approach from 70:30 to 50:50 matched funding; the debate on funding of the new faith school and the receipt of unexpected funding support are examples. While the challenges facing Welsh Government are understood, the ability of Council officers to implement the Programme in a timely, effective and efficient way would be enhanced if there were better understanding and closer working between Government officials and Council officers.

## **Appendix 1 - OGC Gateway™ Review 0: Strategic assessment**

**Programme Title:** Denbighshire Modernising Education Programme

**OGC Gateway™ ID:** AH/13/040/G

**Privacy Marking:** UNCLASSIFIED

---

### **6: Readiness for the next phase**

The PDD identifies 4 future projects (Ysgol Glan Clwyd, the Faith Secondary School, primary school improvements resulting from the Ruthin area review and ICT support). The first 2 of these are included in the 21st Century Schools Programme. The Review Team did not see documentation relating to the management at programme level of the ICT workstream even though the design work on individual projects to date has reflected the importance of ICT in optimising the teaching and learning environment in the new school facilities. The Review Team suggests that in future Programme planning and at Programme Board there should be a greater focus on Programme ICT issues.

The programme and project arrangements in place will stand the Programme in good stead for the next phase, though we comment above on the management of risk and benefits. The establishment of the Corporate Programme Office, the membership of the Programme Board and the close working relationship between the Project Sponsor and the Head of Education are particularly important in ensuring that activities are not pursued in silos. There may be merit in reviewing programme Board membership, for example, to encourage attendance by a Welsh Government representative and to bring additional external challenge (possibly through recruitment of a Non-executive).

The Review Team has not seen any plan for the formal evaluation of the achievement of the objectives of each area review. The identification of the 'before' and 'after' in a way that is clearly linked to the overall policy objectives could be a powerful tool, not just in communication and engagement but in terms of delivering the accountability of the authority to the tax payer.

In addition, the Programme would benefit from a structured process for capturing, disseminating and monitoring lessons learned.

**RECOMMENDATION 4. The Programme should establish a process for evaluating the results of the area reviews.**

**The next OGC Gateway™ Review is expected in mid-2016 at which point Denbighshire will be finalising its next Corporate Plan, advancing proposals on a new faith school and completing construction of the new Rhyl School and the Bodnant Community School.**

## **APPENDIX A**

### **Purposes of OGC Gateway™ Review 0: Strategic assessment**

- Review the outcomes and objectives for the programme (and the way they fit together) and confirm that they make the necessary contribution to overall strategy of the organisation and its senior management.
- Ensure that the programme is supported by key stakeholders.
- Confirm that the programme's potential to succeed has been considered in the wider context of the organisation's delivery plans and change programmes, and any interdependencies with other programmes or projects in the organisation's portfolio and, where relevant, those of other organisations.
- Review the arrangements for leading, managing and monitoring the programme as a whole and the links to individual parts of it (e.g. to any existing projects in the programme's portfolio).
- Review the arrangements for identifying and managing the main programme risks (and the individual project risks), including external risks such as changing business priorities.
- Check that provision for financial and other resources has been made for the programme (initially identified at programme initiation and committed later) and that plans for the work to be done through to the next stage are realistic, properly resourced with sufficient people of appropriate experience, and authorised.
- After the initial Review, check progress against plans and the expected achievement of outcomes.
- Check that there is engagement with the market as appropriate on the feasibility of achieving the required outcome.
- Where relevant, check that the programme takes account of joining up with other programmes, internal and external.

**APPENDIX B**

**Interviewees**

Name	Role
Dr Mohammed Mehmet	Chief Executive
Jackie Walley	Head of Service for Programme
James Curran	Programme Manager
Martin Davies	Headteacher – Ysgol Glan Clwyd
Catrin Jones	Welsh Government
Paul McGrady	Head of Finance and Assets
David Evans	Project Manager – Rhyl High School
Dylan Jones	Chair of Governors, Ysgol Twm o'r Nant
Eryl Williams	Lead Member for Education
Karen Evans	Head of Education
Sion Evans	Design and Construction Manager
Peter Clayton	Project Manager, Ysgol y Llys/Ysgol Glan Clwyd
Andrew Holmes	Wilmott Dixon
Claire Armitstead	Headteacher, Rhyl High School

Add or delete rows as required.

**APPENDIX C**

**Recommendations from previous OGC Gateway™ Review**

Recommendation	Progress/Status

Add or remove rows as appropriate.

Mae tudalen hwn yn fwriadol wag



## MODERNISING EDUCATION PROGRAMME UPDATE

### Prestatyn

Outcomes:-

- Amalgamation of Bodnant Infants and Juniors – Bodnant Community School
- Expansion of Ysgol y Llys
- Removal of mobile accommodation at Bodnant CS, Penmorfa and Hiraddug

### **Ysgol y Llys**

- Cost approximately £3m
- Will provide new 9 classrooms
- Improvements to existing teaching areas
- To be completed by September 2014
- Tranche 3 WG funding worth app 70%

Ysgol y Llys – Sketch View



Ysgol y Llys- Onsite



## Other Tranche 3 Projects

### Ysgol Twm o'r Nant

- Cost approximately £1.4m
- Will provide 3 new classrooms
- New Hall, Reception and staff areas
- To be completed by September 2014
- Tranche 3 WG funding worth app 70%

### Ysgol Twm o'r Nant – Sketch View



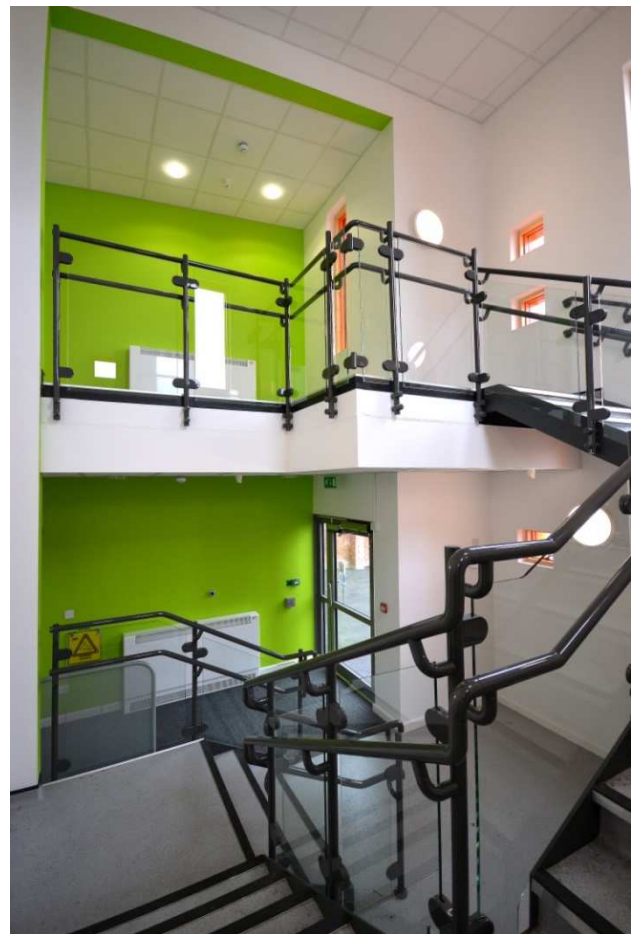
### Ysgol Twm o'r Nant- Onsite



## Ysgol Dewi Sant

- Cost approximately £250k
- Improved circulation around the school and improved sanitation facilities.
- Completed February 2013
- Tranche 3 WG funding worth app 70%

## Ysgol Dewi Sant – Completed



## Bodnant Community School

- Currently operating on 2 sites
- Infants site – old Victorian site, poor learning environment
- Proposal – extend Junior site to enable school on one site
- Project estimate £3.4m



## Dee Valley East

Outcomes:-

- Closure of Ysgol Llantysilio – September 2010
- Extension and refurbishment of Ysgol Bryn Collen / Ysgol Gwernant
- Deferment of decision re Ysgol Glyndyfrdwy
- Future of Ysgol Dyffryn Iâl – expand Llandegla site and close Bryneglwys site

## **Ysgol Gwernant**

- Ysgol Gymraeg y Gwernant established 2005- new Welsh medium school
- Remodelling and extension of existing site- 2010



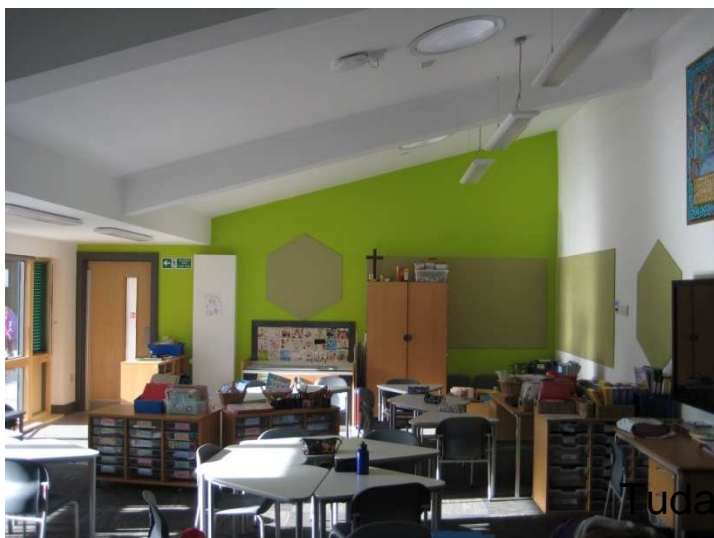
## **Ysgol Dyffryn Iâl**

- Costs approximately £920k
- Extension to Village Hall
- Will revitalise community facility and allow both existing school sites to close
- Completion by October 2013

Ysgol Dyffryn Iâl- Sketch View



Ysgol Dyffryn Iâl-Completed



## **Edeyrnion**

Outcomes:-

- Closure of Ysgol Glyndyfrdwy – September 2012
- Proposed closure of Ysgol Llandrillo and Maes Hyfryd and creation of new area school
- Federation of Ysgol Betws Gwerful Goch and Ysgol Bro Elwern
- Federation of Ysgol Caer Drewyn and Ysgol Carrog

### **Ysgol Bro Dyfrdwy**

- New school formed January 2013
- Initially operate from Maes Hyfryd and Llandrillo sites
- Proposal – extension and refurbishment of Cynwyd site
- Project estimate £1.4m





Ysgol Bro Dyfrdwy- external



Ysgol Bro Dyfrdwy-inside



## **Ruthin**

### Overview of Proposals from Review

- Creation of new Area School to serve the communities of Clocaenog and Cyffylliog.
- Closure of Ysgol Llanbedr with the transfer of pupils to Ysgol Borthyn, Ruthin subject to parental preference.
- Ruthin Town Area - Further detailed feasibility works be undertaken prior to the confirmation of any formal recommendations for Rhos Street School, Ysgol Borthyn, Ysgol Penbarras and Ysgol Rhewl .
- To recommend to the Governing Bodies of Ysgol Pentrecelyn and Ysgol Llanfair DC that they form a federation to be in place no later than 1st September 2014
- Support for retaining the Federation of Ysgol Bryn Clwyd & Ysgol Gellifor and in moving one or both schools along the language continuum.
- Retention of Ysgol Bro Famau and review current capacity of the school.

## Secondary Proposals

### Rhyl High School

- Existing building – very poor condition
- Areas beyond economic repair
- Proposal – new replacement building
- Will allow KS3 / 4 Pupils at Ysgol Tir Morfa to access mainstream education
- Project estimate £25m

### Rhyl High School- Sketch View



## Ysgol Glan Clwyd

- Increasing demand for Welsh medium
- Condition of buildings and facilities
- Proposal - refurbishment of existing facilities and new build area
- Project estimate £15.9m

## Ysgol Glan Clwyd- Sketch View



## New Joint Faith Secondary School

- Amalgamation of Blessed Edward Jones Catholic High School and St Brigid's Middle School on a new site
- Concerns – long term viability of both schools
- New Catholic and Anglican secondary school
- 3 co-promoters-the Catholic diocese in Wrexham, the Anglican diocese in St.Asaph and Denbighshire County Council
- October 2013 Cabinet agreed to the 2<sup>nd</sup> phase of proposals for a single faith school in the county rather than continuing with phase 1- which was to create a single school on the 2 sites of St Brigid's, Denbigh, and Blessed Edward Jones, Rhyl.
- Phase 2- enable formal consultation for the building of a new faith based single site school to replace the existing Blessed Edward Jones Catholic High School in Rhyl and St. Brigid's in Denbigh. Out to public consultation June 2014.

## **Future Priorities**

- Ruthin Town school- Subject to further discussions with Ruthin schools
- Clocaenog / Cyffylliog Area School- Subject to progression of statutory proposals
- Llanfair / Pentrecelyn Area School- Agreed to be considered as part of Band B proposals for 21st Century Schools
- Ysgol Pendref - Enable school to be based on one site, previous amalgamation
- Rhyl Primary - Additional Provision- Potential priority emerging from a future review
- Primary Faith provision - Linked to St Brigid's / Blessed Edward Jones review- Could be funded via 21st Century Schools Provision
- Bodelwyddan- Developer to fund new school

Mae tudalen hwn yn fwriadol wag

# Eitem Agenda 6

<b>Adroddiad i'r:</b>	<b>Pwyllgor Archwilio Perfformiad</b>
<b>Dyddiad y Cyfarfod:</b>	<b>20 Chwefror 2014</b>
<b>Aelod/Swyddog Arweiniol:</b>	<b>Aelod Arweiniol Cwsmeriaid a Chymunedau Pennaeth Cwsmeriaid a Chefnogaeth Addysg</b>
<b>Awdur yr Adroddiad:</b>	<b>Swyddog Cwynion Corfforaethol</b>
<b>Teitl:</b>	<b>Eich Llais – Adroddiad Ch3 2013/14</b>

---

## 1. Am beth mae'r adroddiad yn sôn?

Mae'r adroddiad yn rhoi trosolwg o'r adborth a dderbyniwyd drwy bolisi adborth cwsmeriaid Cyngor Sir Ddinbych 'Eich Llais' yn ystod Chwarter 3 2013/14.

## 2. Beth yw'r rheswm dros lunio'r adroddiad hwn?

Darparu gwybodaeth i'r Pwyllgor am unrhyw faterion yn ymwneud â pherfformiad ac i wneud argymhellion i ymdrin â'r rhain yn unol â hynny.

## 3. Beth yw'r Argymhellion?

Bod y Pwyllgor:

- 3.1 yn nodi ac yn rhoi sylwadau ar berfformiad gwasanaethau; a
- 3.2 phenderfynu os bydd perfformiad unrhyw wasanaeth wrth ymateb i gwynion angen ymchwiliad pellach gan aelod cyswllt ar berfformiad y Pwyllgor.

## 4. Manylion am yr Adroddiad

Penawdau Chwarter 3 (gwelwch yr atodiadau am fwy o wybodaeth).

- Derbyniodd y cyngor 114 o gwynion, sef gostyngiad o 23% ar Ch2.
- Cwynion yn erbyn Cynllunio a Gwarchod y Cyhoedd wedi cyrraedd uchafbwynt yn Ch2 o 39, ond wedi gostwng ers hynny i 24 yn Chwarter 3. Dim ond 8% o'r cwynion hyn sy'n ymwneud â Gorfodi Diogelwch Cymunedol, o'i gymharu â 44% yn Ch2.
- Derbyniodd y cyngor 231 o ganmoliaethau'n ystod Ch3, gostyngiad o 11% ar Ch2.
- Ar gyfer yr ail chwarter yn olynol, Gwasanaethau Oedolion a Busnes a dderbyniodd y nifer fwyaf o ganmoliaethau – 71 (31%).

## Perfformiad

- Ymatebwyd i 96% o'r cwynion o fewn terfynau amser 'Eich Llais'. Mae hyn yn ostyngiad bach ar berfformiad Ch2 (97%), ond yn rhagori ar y targed corfforaethol o 95%.
- 87% o gwynion yn cael eu trin yn llwyddiannus yng nghanam 1, perfformiad cyson o'i gymharu â Ch1 (86%) a Ch2 (87%).
- Dim ond 75% o gwynion cyfnod 2 a ymatebwyd iddynt o fewn terfynau amser 'Eich Llais'. Mae hyn yn ostyngiad ar berfformiad Ch2 (100%).
- Wedi amlygu fod gan 2 maes gwasanaeth statws COCH; Cynllunio Busnes a Pherfformiad ac 'Arall'. Mae'r cwynion a gofnodwyd yn erbyn 'arall' ar gyfer yr awdurdod eang ac yn ymwneud ag achosion o lifogydd.

### **5. Sut mae'r penderfyniad yn cyfrannu at y Blaenoriaethau Corfforaethol?**

Mae'r cynllun 'Eich Llais' yn cyfrannu'n uniongyrchol at y nod corfforaethol: Cyngor rhagorol, sy'n agos at ei gymuned.

### **6. Beth fydd yn ei gostio a sut bydd yn effeithio ar wasanaethau eraill?**

Mae'r holl gostau sy'n ymwneud ag adborth cwsmeriaid wedi eu cynnwys yn y cyllidebau presennol.

### **7. Beth yw prif gasgliadau'r Asesiad o Effaith ar Gydraddoldeb a gwblhawyd ar gyfer y penderfyniad? Dylai'r templed Asesiad o Effaith ar Gydraddoldeb wedi'i lenwi gael ei gynnwys fel atodiad i'r adroddiad.**

Amherthnasol.

### **8. Pa ymgynghoriadau a gynhaliwyd gydag Archwilio ac eraill?**

Adrodd yn fisol i'r Uwch Dîm Arweinyddiaeth. Adrodd yn flynyddol i'r Pwyllgor Llywodraethu Corfforaethol.

### **9. Datganiad y Prif Swyddog Cyllid**

Amherthnasol.

### **10. Beth yw'r risgiau ac oes yna unrhyw beth y gallwn ei wneud i'w lleihau?**

Trwy beidio ymdrin â chwynion yn effeithiol, gall enw da'r Cyngor ddiodef.

### **11. Pŵer i wneud y Penderfyniad**



Mae'r papur hwn yn cynnwys gwybodaeth i alluogi'r Pwyllgor i gyflawni ei rôl graffu mewn perthynas i berfformiad Gwasanaethau'r Cyngor yn unol ag Erthygl 6.3.4(b) yn y Cyfansoddiad.

**Swyddog Cyswllt:**

Swyddog Cwynion Corfforaethol 01824 706169

## Gwybodaeth ar 'Eich Llais'

### A1 Cyfnodau adrodd yn ôl ar 'Eich Llais'

A1.1 Mae'r cyfnodau canlynol yn cael eu defnyddio ar gyfer adrodd data:

Chwarter 1: 1 Ebrill i 30 Mehefin  
Chwarter 2: 1 Gorffennaf i 30 Medi  
Chwarter 3: 1 Hydref i 31 Rhagfyr  
Chwarter 4: 1 Ionawr i 31 Mawrth

### A2 Amserlen ymateb i gwynion

A2.1 Ym mis Hydref 2013, mabwysiadodd yr awdurdod 'Model Polisi Pryderon a Chwynion' Llywodraeth Cymru (fel yr argymhellwyd gan Ombwdsmon Gwasanaethau Cyhoeddus ar gyfer Cymru). Newidiadau allweddol yn cynnwys:

- mabwysiadu proses dau gam, a
- addasiadau i amserlenni ymateb
  - Cam 1: **10** diwrnod gwaith
  - Cam 2: **20** diwrnod gwaith

### A3 Mesurau perfformiad 'Eich Llais'

A3.1 Defnyddir system goleuadau traffig i amlygu perfformiad mewn perthynas â'r graddfeydd amser ymateb i gwynion. Hyn yn graddio perfformiad yn ôl:

<b>Coch</b>	Wedi ymateb i lai na 80% o'r cwynion o fewn yr amserlen ymateb
<b>Oren</b>	Wedi ymateb i fwy na 80% o'r cwynion ond llai na 90% o fewn yr amserlen ymateb
<b>Melyn</b>	Wedi ymateb i fwy na 90% o'r cwynion ond llai na 95% o fewn yr amserlen ymateb
<b>Gwyrdd</b>	Wedi ymateb i fwy na 95% o'r cwynion o fewn y terfynau amser

A3.2 Er mwyn helpu i ganfod os yw perfformiad maes gwasanaeth wedi newid o'r cyfnod(au) blaenorol rydym wedi llunio'r allwedd ganlynol

#### Symbol Dangosydd

- ▲ Gwelliant mewn perfformiad
- ▼ Dirywiad mewn perfformiad
- ◀ Dim newid mewn perfformiad

## Atodiad 2

Tabl 1: Amser ymateb i Gwynion yn gyffredinol ar gyfer Ch3

Maes Gwasanaeth					Chwarter 2 (13/14 yn)				Chwarter 3 (13/14)						
	Cofnodwyd	O fewn	%	Statws	Cofnodwyd	O fewn	%	Statws	Cofnodwyd	O fewn	%	Statws			
Cynllunio Busnes a Pherfformiad	0	0			5	5	100%	–	G	1	0	0%	▼	C	
Gwasanaethau Cyfreithiol a Democrataidd	2	2	100%	◀	G	1	100%	◀	G	0	0				
Cwsmeriaid a Chefnogaeth Addysg	8	8	100%	◀	G	8	100%	◀	G	2	2	100%	◀	G	
Yr Amgylchedd	38	36	95%	▼	G	34	34	100%	▲	G	27	27	100%	◀	G
Cyllid ac Asedau	10	10	100%	◀	G	7	6	86%	▼	O	13	13	100%	▲	G
Tai a Datblygu Cymunedol	17	16	94%	▲	M	21	21	100%	▲	G	9	9	100%	◀	G
Cynllunio a Gwarchod y Cyhoedd	8	8	100%	◀	G	39	38	97%	▼	G	24	24	100%	▲	G
Priffyrdd ac Isadeiledd	22	21	95%	▲	G	19	17	89%	▼	O	22	21	95%	▲	G
Cyfathrebu, Marchnata a Hamdden	10	10	100%	◀	G	11	11	100%	◀	G	14	14	100%	◀	G
Addysg	2	2	100%	–	G	1	1	100%	◀	G	0	0			
Arall	0	0				3	2	67%	–	C	2	0	0%	◀	C
	<b>117</b>	<b>113</b>	<b>97%</b>	◀	G	<b>149</b>	<b>144</b>	<b>97%</b>	◀	G	<b>114</b>	<b>110</b>	<b>96%</b>	▼	G

Tudalen 52

Tabl 2: Amseroedd ymateb corfforaethol ar gyfer pob cam cwyno yn ystod Chwarter 3

Ch2	Nifer	O fewn	%
Cam 1	101	100	99%
Cam 2	12	9	75%
Cam 3	1	1	100%
OGCC	0	0	
<b>Cyfanswm</b>	<b>114</b>	<b>110</b>	<b>96%</b>

Tabl 3: Data cwynion Gwasanaethau Cymdeithasol

## CRYNODEB O Gwynion AGORED A CHAEËDIG

Mis	Gwasanaethau Oedolion a Busnes					Corfforaethol - Oedolion					% o fewn amser, wedi dod i ben	Gwasanaethau Plant a Theuluoedd					Corfforaethol - Plant					% o fewn amser, wedi dod i ben
	Nifer o Gwynion	Nifer o fewn amser	Tu hwnt	Dal ar agor	Wedi dod i ben hy tynnu'n ôl	Dim Cwynion	Nifer o fewn amser	Tu hwnt	Dal ar agor	Wedi dod i ben hy tynnu'n ôl		Nifer o Gwynion	Nifer o fewn amser	Tu hwnt	Dal ar agor	Wedi dod i ben hy tynnu'n ôl	Dim Cwynion	Nifer o fewn amser	Tu hwnt	Dal ar agor	Wedi dod i ben hy tynnu'n ôl	
Ebrill	3	3				0					100%	4	2			2	0	0				100%
Mai	4	4				0					100%	3	2	1			0	0				67%
Mehefin	4	4				0					100%	6	6			1	1					100%
Gorffennaf	5	5				0					100%	9	8			1	1	1				100%
Awst	5	4			1	0					100%	2	1	1			0					50%
Medi	4	4				0					100%	5	4			1	0					100%
Hydref	5	4	1								80%	7	6		1							100%
Tachwedd	4	4				0					100%	4	3		1		0					100%
Rhagfyr	3	3		1		0					100%	4	4				0					100%
Ionawr																						
Chwefror																						
Mawrth																						
Cyfanswm	37	35	1	1	1	0	0	0	0	0	97%	44	36	2	2	4	2	2	0	0	0	95%

Yn unol â deddfwriaeth, mae cwynion gwasanaethau cymdeithasol ac ysgolion yn cael eu trin mewn proses ar wahân.

Tabl 4: Canmoliaethau a dderbyniwyd yn ystod Chwarter 3

Maes Gwasanaeth	Na	%
Gwasanaethau Cymdeithasol Oedolion	71	31%
Gwasanaethau Cymdeithasol Plant	22	10%
Cynllunio Busnes a Pherfformiad	0	0%
Gwasanaethau Cyfreithiol a Democrataidd	0	0%
Cwsmeriaid a Chymorth Addysg	11	5%
Yr Amgylchedd	41	18%
Cyllid ac Asedau	0	0%
Gwasanaethau Tai	22	10%
Cynllunio a Gwarchod y Cyhoedd	9	4%
Priffyrdd ac Isadeiledd	38	16%
Cyfathrebu, Marchnata a Hamdden	17	7%
<b>CYFANSWM</b>	<b>231</b>	

# Eitem Agenda 7

<b>Adroddiad i'r:</b>	<b>Pwyllgor Archwilio Perfformiad</b>
<b>Dyddiad y Cyfarfod:</b>	<b>20 Chwefror 2014</b>
<b>Awdur yr Adroddiad:</b>	<b>Y Cydlynnydd Archwilio</b>
<b>Teitl:</b>	<b>Rhaglen Waith Archwilio</b>

---

## 1. Beth yw cynnwys yr adroddiad?

Mae'r adroddiad yn cyflwyno drafft rhaglen waith i'r dyfodol y Pwyllgor Archwilio Perfformiad i'r aelodau ei hystyried.

## 2. Beth yw'r rheswm dros lunio'r adroddiad hwn?

Gofyn i'r Pwyllgor adolygu a chytuno ar ei raglen waith i'r dyfodol, a rhoi'r wybodaeth ddiweddaraf i aelodau ar faterion perthnasol.

## 3. Beth yw'r Argymhellion?

Argymhellir y dylai'r Pwyllgor ystyried yr wybodaeth a ddarparwyd a chymeradwyo, adolygu neu addasu eu rhaglen gwaith i'r dyfodol fel yr ystyrir yn briodol.

## 4. Manylion am yr Adroddiad.

- 4.1 Mae Erthygl 6 Cyfansoddiad Cyngor Sir Ddinbych yn nodi cylch gorchwyl, swyddogaethau ac aelodaeth pob Pwyllgor Archwilio, tra bo rheolau'r gweithdrefnau i bwyllgor archwilio wedi'u gosod yn Rhan 4 y Cyfansoddiad.
- 4.2 Mae'r Cyfansoddiad yn amodi bod yn rhaid i bwyllgorau archwilio'r Cyngor baratoi ac adolygu rhaglen ar gyfer eu gwaith i'r dyfodol. Drwy adolygu a blaenoriaethu materion mae modd i aelodau sicrhau fod y rhaglen waith yn cyflwyno rhaglen dan arweiniad yr aelodau.
- 4.3 Arfer sydd wedi'i fabwysiadu yn Sir Ddinbych ers nifer o flynyddoedd yw bod pwyllgorau archwilio'n cyfyngu ar nifer yr adroddiadau a ystyrir mewn unrhyw gyfarfod i uchafswm o bedwar, yn ogystal ag adroddiad rhaglen waith y Pwyllgor ei hun. Nod y dull hwn yw hwyluso cael trafodaeth fanwl ac effeithiol ar bob pwnc.
- 4.4 Gofynnir i'r Pwyllgor ystyried ei raglen waith ddrafft ar gyfer cyfarfodydd y dyfodol, fel y manylir yn atodiad 1, a'i chymeradwyo, ei diwygio neu ei newid fel yr ystyrir yn briodol gan ystyried:
  - materion a godwyd gan aelodau'r Pwyllgor
  - y materion a gyfeiriwyd ato gan y Grŵp Cadeiryddion ac Is-Gadeiryddion Archwilio

- Perthnasedd i flaenoriaethau'r Pwyllgor/y Cyngor/y Gymuned
  - Cynllun Corfforaethol y Cyngor ac Adroddiad Blynyddol Cyfarwyddwr Gwasanaethau Cymdeithasol
  - bodloni'r llwyth gwaith
  - amseroldeb
  - canlyniadau
  - gwybodaeth a materion allweddol i'w cynnwys mewn adroddiadau
  - a fydd yr aelod Cabinet perthnasol yn cael gwahoddiad (gan ystyried a yw eu presenoldeb yn angenrheidiol neu yn ychwanegu gwerth). (Ym mhob sefyllfa bydd y penderfyniad yn cael ei rannu gyda'r aelod arweiniol perthnasol)
  - cwestiynau i'w gofyn i swyddogion/aelodau arweiniol y Cabinet.
- 4.5 Wrth ystyried eitemau i'w cynnwys yn y rhaglen waith i'r dyfodol, efallai y byddai aelodau'n cael budd o ystyried y cwestiynau canlynol wrth benderfynu a yw eitem yn addas neu beidio:
- beth yw'r mater?
  - pwy yw'r budd-ddeiliaid?
  - beth sy'n cael ei ystyried mewn mannau eraill?
  - beth sydd angen i archwilio ei wybod? a
  - pwy sy'n gallu cynorthwyo?
- 4.6 Fel y crybwyllwyd ym mharagraff 4.2 uchod, mae Cyfansoddiad y Cyngor yn gofyn i bwyllgorau archwilio baratoi ac adolygu rhaglen ar gyfer eu gwaith i'r dyfodol. Er mwyn cynorthwyo'r broses o flaenoriaethu adroddiadau, os yw'r swyddogion o'r farn fod pwnc yn haeddu cael amser i'w drafod ar raglen fusnes y Pwyllgor, mae'n rhaid iddynt wneud cais ffurfiol i'r Pwyllgor ystyried derbyn adroddiad ar y pwnc hwnnw. Gwneir hyn trwy gyflwyno 'ffurflen gynnig' sy'n egluro pwrpas, pwysigrwydd a chanlyniadau posibl y pynciau a awgrymir. Does dim un ffurflen gynnig wedi dod i law i'w hystyried yn y cyfarfod cyfredol.

#### Rhaglen Waith i'r Dyfodol y Cabinet

- 4.7 Wrth benderfynu ar eu rhaglen waith i'r dyfodol mae'n bwysig fod pwyllgorau archwilio yn ystyried amserlen rhaglen waith y Cabinet. Ar gyfer y diben hwn, mae rhaglen waith y Cabinet wedi ei chynnwys yn Atodiad 2.

#### Datblygiad Penderfyniadau'r Pwyllgor

- 4.8 Yn Atodiad 3 mae tabl yn crynhoi penderfyniadau diweddar y Pwyllgor a gwybodaeth am y datblygiadau yn sgil y penderfyniadau.

### **5. Grŵp Cadeiryddion ac Is-Gadeiryddion Archwilio**

Dan drefniadau archwilio'r Cyngor mae Grŵp Cadeiryddion ac Is-Gadeiryddion Archwilio (GCIGA) yn gweithredu fel pwyllgor cydlynu. Bydd cyfarfod nesaf y Grŵp ar 27 Chwefror.

**6. Sut mae'r penderfyniad yn cyfrannu at y Blaenoriaethau Corfforaethol?**

Bydd archwilio effeithiol yn gymorth i'r Cyngor gynnal y blaenoriaethau corfforaethol yn unol ag anghenion cymunedau a dymuniadau trigolion. Bydd datblygu ac adolygu'r rhaglen waith gydlynol yn barhaus yn cynorthwyo'r Cyngor i fonitro ac adolygu materion polisi.

**7. Beth yw prif gasgliadau'r asesiad a gynhaliwyd ynglŷn ag effaith y penderfyniad ar gydraddoldeb? Dylid atodi'r templed AoEaG fel atodiad i'r adroddiad hwn.**

Ni chynhaliwyd Asesiad o Effaith ar Gydraddoldeb er diben yr adroddiad hwn gan nad yw ystyried rhaglen waith i'r dyfodol y Pwyllgor yn debygol o gael effaith andwyol neu annheg ar bobl sy'n rhannu nodweddion sydd wedi'u diogelu.

**8. Beth fydd y gost a sut y bydd yn effeithio ar wasanaethau eraill?**

Mae'n bosib y bydd yn rhaid i wasanaethau neilltuo amser swyddog i gynorthwyo'r Pwyllgor gyda'r eitemau a nodwyd yn y rhaglen waith a chydag unrhyw gam gweithredu yn dilyn ystyried yr eitemau hynny.

**9. Pa ymgynghoriadau a gynhaliwyd?**

Does dim angen cynnal ymgynghoriad ar yr adroddiad hwn. Fodd bynnag, mae'r adroddiad ei hun a'r ystyriaeth a roir gan y Pwyllgor i'w raglen waith ar gyfer y dyfodol yn gyfystyr ag ymgynghoriad gyda'r Pwyllgor o ran ei raglen waith.

**10. Pa risgiau sy'n bodoli ac a oes unrhyw beth y gallwn ei wneud i'w lleihau?**

Nid oes risg wedi ei ganfod o ran y Pwyllgor yn ystyried ei raglen waith. Fodd bynnag, wrth adolygu ei raglen waith yn rheolaidd gall y Pwyllgor sicrhau bod meysydd sy'n peri pryder yn cael eu hystyried a'u harchwilio fel y maent yn dod i'r amlwg a bod argymhellion yn cael eu gwneud er mwyn mynd i'r afael â nhw.

**11. Grym i wneud Penderfyniad**

Yn unol ag Erthygl 6.3.7 Cyfansoddiad y Cyngor mae'n rhaid i bwyllgorau archwilio'r Cyngor baratoi rhaglen waith a'i hadolygu.

**Swyddog Cyswllt:**

Y Cydlynnydd Archwilio

Rhif ffôn: (01824) 712554

E-bost: [dcc\\_admin@sirddinbych.gov.uk](mailto:dcc_admin@sirddinbych.gov.uk)

Mae tudalen hwn yn fwriadol wag



**Note: Any items entered in italics have not been approved for inclusion at the meeting shown by the Committee. Such reports are listed here for information, pending formal approval.**

Meeting	Lead Member(s)	Item (description / title)	Purpose of report	Expected Outcomes	Author	Date Entered
20 March	<b>Cllr. Bobby Feeley</b>	1. In-House Provider Visit 2013/14 Overview	To consider feedback on the visits undertaken in-house social care providers which highlight the quality, customer experience and good practice/improvement actions for the providers	To monitor the quality of services provided and identify any issues which arise from the visits which require to be addressed in order to improve the quality of the service provided	Phi Gilroy	August 2013
1 May	<b>Cllr. Julian Thompson-Hill</b>	1. Corporate Health and Safety Annual Report	To consider the Council's management of general health and safety and fire safety matters	Assurances that the Authority is abiding and conforming with all relevant H&S legislation and therefore mitigate the risk of litigation	Gerry Lapington	November 2013
	<b>Cllr. Hugh Irving (required)</b>	2. Housing Service's Improvement Plan	To examine the Service's Improvement Plan (including the housing maintenance plan)	To ensure that the Service is continuously improving its performance and effectively contributing towards the corporate plan priority of ensuring residents have access to good quality housing	Peter McHugh	December 2013
12 June (tbc)	<b>Cllr. Hugh Irving</b>	1. Your Voice' complaints performance (Q4)	To scrutinise Services' performance in complying with the Council's complaints process	Identification of areas of poor performance with a view to the development of recommendations to	Jackie Walley/Clare O'Gorman	February 2013

Tudalen 59

Meeting	Lead Member(s)	Item (description / title)	Purpose of report	Expected Outcomes	Author	Date Entered
				address weaknesses.		
	<b>Cllr. Barbara Smith</b>	2. Corporate Risk Register	To consider the Council's Corporate Risk Register following the latest formal review by CET	Identification of effective measures to address the high level risks	Alan Smith/Nicola Kneale	February 2013
	<b>Cllr. Barbara Smith</b>	3 Corporate Plan QPR: Q4 2013/14	To monitor the Council's progress in delivering the Corporate Plan 2012-17 consider the latest version of	Ensuring that the Council meets its targets, delivers its Corporate Plan and the Council's services in line with its aspirations and to the satisfaction of local residents	Alan Smith/Nicola Kneale	February 2013
	<b>Cllr. David Smith</b>	4 Provision of CCTV and Out of Hours Service	To consider the preferred options identified for the delivery, with limited financial resources, of an equitable CCTV and associated Out of Hours service across the County in future	Provision of an effective and efficient service will assist the Authority to deliver the corporate priorities of protecting vulnerable people, keeping streets clean and tidy and bring the Council closer to the community	Graham Boase/Emlyn Jones	October 2013
17 July (tbc)	<b>Cllr. Huw LI Jones</b>	1. Arms Length Organisations	To consider proposals on how to effectively scrutinise the Council's Arm's Length Organisations	To realise value for money from these organisations and to ensure that they effectively contribute towards the delivery of the Council's priorities	Alan Smith/Ivan Butler	October 2013 (rescheduled by the Committee January 2014)
	<b>Cllr. Eryl Williams</b>	2 Estyn Action Plan [Education]	To (i) monitor the progress	(i) Better quality services and better	Joint report by Karen	June 2013

Tudalen 60

Meeting	Lead Member(s)	Item (description / title)	Purpose of report	Expected Outcomes	Author	Date Entered
	<i>(required)</i>		<p>achieved to date in implementing the actions to address the 2 recommendations in the 2012 Estyn Inspection of the Quality of Education Services;</p> <p>(ii) detail measures taken to improve accuracy of KS3 teacher assessment and GwE's use of Moodle;</p> <p>(iii) detail the findings of the audit of services available to children and young people, their impact and value for money; and</p> <p>(iv) inform members of any proposed changes to education delivery, performance/attainment measures and future inspection arrangements and expectations</p>	<p>outcomes for pupils through early identification of any slippages in progressing actions, or in implementing mitigating measures to address identified risks; and</p> <p>(ii) identification of measures to address national policy requirements/challenges and consequential inspection arrangements with a view to mitigating the risk of disruption to pupils and teachers and deterioration in performance and attainment rates</p>	Evans/Liz Grieve	
2 October (tbc)	<b>Cllr. Barbara Smith</b>	1. Annual Performance Review 2013/14	To seek Scrutiny's view on the Council's Annual Performance Review report prior to its submission to County Council for approval	Participation in the consultation on the Annual Report will assist the Committee to identify areas of weakness and build them into its future work programme with a view to realising	Alan Smith	September 2013

Meeting	Lead Member(s)	Item (description / title)	Purpose of report	Expected Outcomes	Author	Date Entered
				improvements going forward		
	<b>Cllr. Eryl Williams</b>	2. Provisional External Examinations and Teacher Assessments <b>[Education]</b>	To review the performance of schools and that of looked after children	Scrutiny of performance leading to recommendations for improvement	Julian Molloy	September 2013
20 November (tbc)						
15 January 2015 (tbc)						
26 February (tbc)						
16 April (tbc)						

Tudalen 61

**Future Issues**

<b>Item (description / title)</b>	<b>Purpose of report</b>	<b>Expected Outcomes</b>	<b>Author</b>	<b>Date Entered</b>
<i>Parking Enforcement (deferred until after Communities Scrutiny Committee has considered a report on the impact of the Council's Parking Enforcement Strategy on economic development scheduled for 25 November 2013 and a further report on Parking Policy and Parking and Traffic Review Scoping Exercise on 6 March 2014 )</i>	<i>To examine the statistics on the number of Penalty Charge Notices (PCNs) issued during 2012/12 and 2013/14 to date, the breakdown of PCNs per MAG area (and per town), the number of prosecutions arising from the issue of CPNs (and the associated costs of pursuing prosecutions), cost of the running the service and the income generated for the Authority</i>	<i>Assurances that the Service is demonstrating value for money and supporting the Council's delivery of its corporate priorities of developing the local economy and maintaining clean and tidy streets</i>	<i>Mike Jones</i>	<i>By the SCVCG September 2013</i>

**Information/Consultation Reports**

<b>Date</b>	<b>Item (description / title)</b>	<b>Purpose of report</b>	<b>Author</b>	<b>Date Entered</b>
<b>February 2014</b> [Information]	Arms Length Organisations	To outline the parameters of the forthcoming review of the Council's governance arrangements for Arms Length organisations	Ivan Butler	January 2014
<b>February 2014</b> [Information] <b>[Education]</b>	County's Special Schools Exam Results	To detail the teacher assessment and external examination results of pupils attending the County's special schools	Julian Molloy	January 2014
<b>February 2014</b> [Information] <b>[Education]</b>	Condition of the County's School Estate	To detail the structural and fabric condition of the County's School estate	Jackiw Walley/James Curran	January 2014
<b>May /June 2014</b> [Information]	New Library Performance Standards	Details of the proposed new national Library Service Standards and Denbighshire's evaluation/proposals to meet those standards. The report will assist the Committee to determine whether this topic merits detailed scrutiny	Jamie Groves/Roger Ellerton/Arwyn Jones	January 2014
<b>Available during the summer term</b>	Use of Supply Teachers <b>[Education – to be shared with coopted</b>	To detail the use made of supply teachers within the county during recent years and to date this year.	Karen Evans	September 2013

<b>2014</b> [Information] <b>[Education]</b>	<b>members]</b>	The report to detail the costs to the Council of hiring supply teachers, the lengths of time for their hire, the expectations/objectives given to them upon engagement and the quality monitoring arrangements in place to evaluate their effectiveness		
--	-----------------	---	--	--

**Note for officers – Committee Report Deadlines**

Meeting	Deadline	Meeting	Deadline	Meeting	Deadline
20 March	<b>6 March</b>	1 May	<b>17 April</b>	12 June	<b>29 May</b>

Performance Scrutiny Work Programme.doc

Updated 04/02/14 RhE

Cabinet Forward Work Plan

Appendix 2

Tudalen 64

Meeting	Item (description / title)	Purpose of report	Cabinet Decision required (yes/no)	Author – Lead member and contact officer	
<b>25 March</b>	1	Finance Report Update	To update Cabinet on the current financial position of the Council	Tbc	Cllr Julian Thompson-Hill / Paul McGrady
	2	Corporate Plan QPR: Quarter 3 2013/14	To monitor the Council's progress in delivering the Corporate Plan 2012 -17	Tbc	Cllr Barbara Smith / Tony Ward
	3	Response to consultation on Town and Areas Plans – Rhyl, Denbigh & Rhuddlan areas	To approve the Town and Area Plans for Rhyl, Denbigh & Rhuddlan areas	Tbc	Cllr Hugh Evans / Rebecca Maxwell / Peter McHugh / Tom Booty
	4	Procurement Business Case for Three Counties	To consider the Business Case	Yes	Cllr Julian Thompson Hill / Paul McGrady
	5	West Rhyl Housing Improvement Project	Detailed design of open green space to be considered	Tbc	Cllr Hugh Evans / Carol L Evans
	6	Proposal to close Ysgol Llanbedr	To consider objections received and whether to approve implementation of the proposal	Yes	Cllr Eryl Williams / Jackie Walley
	7	Recommendations of the Strategic Investment Group	To consider the capital bids reviewed by the Strategic	Yes	Cllr Julian Thompson-Hill / Paul McGrady

Cabinet Forward Work Plan

Meeting		Item (description / title)	Purpose of report	Cabinet Decision required (yes/no)	Author – Lead member and contact officer
			Investment Group for inclusion in the Capital Plan.		
	8	Street Naming Policy	To consider amendments to the current Street Naming Policy and to adopt the new Policy.	Yes	Cllr Huw Jones / Hywyn Williams
	9	Items from Scrutiny Committees	To consider any issues raised by Scrutiny for Cabinet's attention	Tbc	Scrutiny Coordinator
<b>29 April</b>	1	Finance Report Update	To update Cabinet on the current financial position of the Council	Tbc	Cllr Julian Thompson-Hill / Paul McGrady
	2	Items from Scrutiny Committees	To consider any issues raised by Scrutiny for Cabinet's attention.	Tbc	Scrutiny Coordinator
<b>27 May</b>	1	Finance Report Update	To update Cabinet on the current financial position of the Council	Tbc	Cllr Julian Thompson-Hill / Paul McGrady
	2	Items from Scrutiny Committees	To consider any issues raised by Scrutiny for Cabinet's attention.	Tbc	Scrutiny Coordinator
<b>June</b>	1	Finance Report Update	To update Cabinet on the	Tbc	Cllr Julian Thompson-



Cabinet Forward Work Plan

Meeting	Item (description / title)		Purpose of report	Cabinet Decision required (yes/no)	Author – Lead member and contact officer
			current financial position of the Council		Hill / Paul McGrady
	2	Corporate Plan QPR: Quarter 3 2013/14	To monitor the Council's progress in delivering the Corporate Plan 2012 -17	Tbc	Cllr Barbara Smith / Tony Ward
	3	Items from Scrutiny Committees	To consider any issues raised by Scrutiny for Cabinet's attention	Tbc	Scrutiny Coordinator

Note for officers – Cabinet Report Deadlines

<i>Meeting</i>	<b>Deadline</b>	<i>Meeting</i>	<b>Deadline</b>	<i>Meeting</i>	<b>Deadline</b>
<i>February</i>	<b>4 February</b>	<i>March</i>	<b>11 March</b>	<i>April</i>	<b>10 April</b>

Updated 04/02/14 - SP

Cabinet Forward Work Programme.doc

Mae tudalen hwn yn fwriadol wag

## Progress with Committee Resolutions

Date of Meeting	Item number and title	Resolution	Progress
16 January 2014	4. Minutes	<p><b>RESOLVED</b> – that:-</p> <p>(a) the minutes be approved as a correct record; and</p> <p>(b) Councillor Colin Hughes be appointed as the Committee substitute Member on the Economic and Community Ambition Board.</p>	Officers advised of the appointment
	5. Estyn Action Plan	<p><b>RESOLVED</b> – that:-</p> <p>(a) subject to the observations made, the Committee note the progress achieved to date in addressing Estyn's recommendations.</p> <p>(b) the Committee continues to monitor the Action Plan's implementation on a regular basis until Estyn's next inspection of the Authority's education services provision.</p> <p>(c) the next monitoring report be presented to the Committee at the end of the 2014 summer term.</p> <p>(d) the report includes details of the measures taken by the Authority to address issues relating to improving the accuracy of teacher assessments at Key Stage 3 and their effectiveness in achieving this aim, along with evidence that GwE is using Moodle to host (PDF) levelled exemplar materials in all subjects and levels, and</p> <p>(e) the report also includes the results of the audit currently underway of all services available to children and young people in the county and the effectiveness of the system</p>	Monitoring report scheduled into the Committee's forward work programme for its July 2014 meeting. Purpose of report amended to include the additional information requested in resolutions (d) and (e)

		<i>established to measure the impact and value for money of those services on the County's children and young people.</i>	
	<b>6. KS4 Examination Results</b>	<p><b>RESOLVED</b> – that the Committee:-</p> <p>(a) <i>subject to Members' comments, receive and note the contents of the report.</i></p> <p>(b) <i>request an information report on the examination results and teacher assessments on pupils attending the County's Special Schools, pupils with additional learning needs attending mainstream education, pupils educated at home, children/young people placed out of County, and those attending specialist schools outside the County, and</i></p> <p>(c) <i>congratulate education staff and pupils on the results achieved.</i></p>	Information report requested and will be circulated to Committee members as soon as it is available
	<b>7. School Places Data</b>	<p><b>RESOLVED</b> – that:-</p> <p>(a) <i>the report be received, subject to Members' observations to note the position and actions being undertaken as part of the Corporate Plan to improve the overall condition of schools in Denbighshire, and</i></p> <p>(b) <i>a further information report be provided detailing the condition of the County's school estate.</i></p>	Information report requested and will be circulated to Committee members as soon as it is available
	<b>8. Denbighshire Performance on Fly Tipping Issues</b>	<p><b>RESOLVED</b> – that, subject to Members observations, the Committee:-</p> <p>(a) <i>support the Council's current approach and method of recording fly-tipping incidents;</i></p> <p>(b) <i>supports the continuation of the Council's policy of rigorous enforcement on fly-tipping issues;</i></p> <p>(c) <i>endorses the proposal that Denbighshire should continue</i></p>	A copy of the letter sent to the Chair of Natural Resources Wales can be seen in the Information Brief

		<p><i>to lobby Natural Resources Wales regarding the quality of the 'Flycapture' data collated across Wales; and</i></p> <p><i>(d) agreed that the Chair of the Committee write to the Chair of Natural Resources Wales reinforcing the Committee's concerns with respect to the quality and reliability of the 'Flycapture' data, and that the Head of Internal Audit also raise the Committee's concerns with relevant officers at Natural Resources Wales.</i></p>	
--	--	---	--

circulated to  
Committee members

Mae tudalen hwn yn fwriadol wag